

Human ECM1, C-His Tag Protein

HA210933



Product name:	Human ECM1, C-His Tag
Species reactivity:	Human
Bio-Activity:	Testing in progress.
Protein construction description:	A DNA sequence encoding the human ECM1 (Q16610-1) (Ala 20-Glu 540) was expressed with a His tag at the C-terminus

Background: Extracellular matrix protein 1 is a protein that in humans is encoded by the ECM1 gene. This gene encodes an extracellular protein containing motifs with a cysteine pattern characteristic of the cysteine pattern of the ligand-binding "double-loop" domains of the albumin protein family. This gene maps outside the epidermal differentiation complex (EDC), a cluster of three gene families involved in epidermal differentiation. Alternatively spliced transcript variants encoding distinct isoforms have been described. ECM1 is implicated in breast cancer, thyroid cancer, hepatocellular carcinoma, and other cancers, and also in ulcerative colitis. Germline mutations in ECM-1 cause the genetic disease lipoid proteinosis. Autoimmune attack on ECM-1 is responsible for lichen sclerosis.

Purity: >95% as determined by SDS-PAGE.

Endotoxin: Less than 1.0 EU per µg by the LAL method.

Fragment region: ECM1 (20-540)

Source: HEK293

Accession: Q16610-1

Predicted molecular mass: 60.2 kD

Formulation: Lyophilized from a 0.2 µm filtered solution of PBS, pH7.4, 5% Trehalose, 5% mannitol.

Reconstitution: Reconstitute at 250 µg/ml in sterile water.

Storage: Please avoid repeated freeze-thaw cycles. Samples are stable for up to twelve months from date of receipt at -20°C to -80°C. It is recommended that aliquot the reconstituted solution to minimize freeze-thaw cycles.

Hangzhou Huaan Biotechnology Co., Ltd.

Orders: 0086-571-88062880

Technical: 0086-571-89986345

Service mail: support@huabio.cn

 华安生物
HUABIO
www.huabio.cn

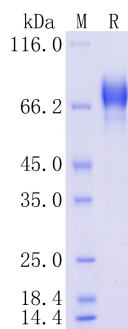


Fig1: Protein on SDS-PAGE under reducing (R) condition.

Note: All products are "FOR RESEARCH USE ONLY AND ARE NOT INTENDED FOR DIAGNOSTIC OR THERAPEUTIC USE".