

# Human CCL3L1, N-Twin Strep, C-His, Flag Tag Protein

## HA210749



<b>Product name:</b>	Human CCL3L1, N-Twin Strep, C-His, Flag Tag
<b>Species reactivity:</b>	Human
<b>Bio-Activity:</b>	Testing in progress.
<b>Protein construction description:</b>	A DNA sequence encoding the human CCL3L1 protein (P16619) (Ala 24-Ala 93) was expressed with a Twin strep tag at the N-terminus and both His, Flag tag at the C-terminus.
<b>Background:</b>	The macrophage inflammatory protein-1 alpha (MIP-1 alpha)/CCL3 and-1 beta (MIP-1 beta)/CCL4 are highly homologous CC family chemokines that were originally co-purified from medium conditioned by an LPS-stimulated murine macrophage cell line. Mouse MIP-1 alpha and MIP-1 beta are encoded by their respective single-copy genes. In human, additional non-allelic MIP-1 alpha and MIP-1 beta genes also exist.
<b>Purity:</b>	>95% as determined by SDS-PAGE.
<b>Endotoxin:</b>	Less than 1.0 EU per µg by the LAL method.
<b>Fragment region:</b>	CCL3L1 (24-93)
<b>Source:</b>	E.coli
<b>Accession:</b>	P16619
<b>Predicted molecular mass:</b>	14.5 kD
<b>Formulation:</b>	Lyophilized from a 0.2 µm filtered solution of PBS, pH7.4, 5% Trehalose, 5% mannitol.
<b>Reconstitution:</b>	Reconstitute at 250 µg/ml in sterile water.
<b>Storage:</b>	Please avoid repeated freeze-thaw cycles. Samples are stable for up to twelve months from date of receipt at -20°C to -80°C. It is recommended that aliquot the reconstituted solution to minimize freeze-thaw cycles.

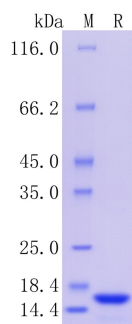
Hangzhou Huaan Biotechnology Co., Ltd.

Orders:0086-571-88062880

Technical:0086-571-89986345

Service mail:support@huabio.cn

 华安生物  
HUABIO  
www.huabio.cn



**Fig1:** Protein on SDS-PAGE under reducing (R) condition.

---

**Note:** All products are "FOR RESEARCH USE ONLY AND ARE NOT INTENDED FOR DIAGNOSTIC OR THERAPEUTIC USE".

---