

Human HGF, C-Flag Tag Protein

HA210739



Product name:	Human HGF, C-Flag Tag
Species reactivity:	Human
Bio-Activity:	Testing in progress.
Protein construction description:	A DNA sequence encoding the human HGF protein (P14210) (Gln 32-Ser 728) was expressed with a Flag tag at the C-terminus.

Background:	HGF, also known as scatter factor and hepatopoietin A, is a pleiotropic protein in the plasminogen subfamily of S1 peptidases. It is a multidomain molecule that includes an N-terminal PAN/APPLE-like domain, four Kringle domains, and a serine proteinase-like domain that has no detectable protease activity. Human HGF is secreted as an inactive 728 amino acid (aa) single chain propeptide. It is cleaved after the fourth Kringle domain by a serine protease to form bioactive disulfide-linked HGF with a 60 kDa alpha and 30 kDa beta chain. Alternate splicing generates human HGF isoforms that lack the proteinase-like domain and different numbers of the Kringle domains. Human HGF shares 91%-94% aa sequence identity with bovine, canine, feline, mouse, and rat HGF. HGF binds heparan-sulfate proteoglycans and the widely expressed receptor tyrosine kinase, HGF R/c-MET. HGF-dependent c-MET activation is implicated in the development of many human cancers. HGF regulates epithelial morph.
--------------------	--

Purity:	>90% as determined by SDS-PAGE.
Endotoxin:	Less than 1.0 EU per µg by the LAL method.
Fragment region:	HGF (32-728)
Source:	HEK293
Accession:	P14210
Predicted molecular mass:	81.3 kD
Formulation:	Lyophilized from a 0.2 µm filtered solution of PBS, pH7.4, 5% Trehalose, 5% mannitol.
Reconstitution:	Reconstitute at 250 µg/ml in sterile water.
Storage:	Please avoid repeated freeze-thaw cycles. Samples are stable for up to twelve months from date of receipt at -20°C to -80°C. It is recommended that aliquot the reconstituted solution to minimize freeze-thaw cycles.

Hangzhou Huaan Biotechnology Co., Ltd.

Orders: 0086-571-88062880

Technical: 0086-571-89986345

Service mail: support@huabio.cn

 华安生物
HUABIO
www.huabio.cn

Applications: WB=Western blot IHC-P=Immunohistochemistry (paraffin) IF-Cell=Immunofluorescence (Cell) IF-Tissue=Immunofluorescence (Tissue) FC=Flow cytometry IP=Immunoprecipitation

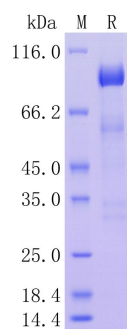


Fig1: Protein on SDS-PAGE under reducing (R) condition.

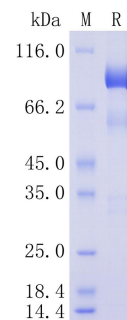


Fig2: Protein on SDS-PAGE under reducing (R) condition.

Note: All products are “FOR RESEARCH USE ONLY AND ARE NOT INTENDED FOR DIAGNOSTIC OR THERAPEUTIC USE”.