

# Human ABL1/JTK7/p150, C-His, Flag Tag Protein

## HA210682



<b>Product name:</b>	Human ABL1/JTK7/p150, C-His, Flag Tag
<b>Species reactivity:</b>	Human
<b>Bio-Activity:</b>	Testing in progress.
<b>Protein construction description:</b>	A DNA sequence encoding the human ABL1/JTK7/p150 protein (P00519) (Ala 611-Lys 947) was expressed with both His, Flag tag at the C-terminus.

**Background:** Non-receptor tyrosine-protein kinase that plays a role in many key processes linked to cell growth and survival such as cytoskeleton remodeling in response to extracellular stimuli, cell motility and adhesion, receptor endocytosis, autophagy, DNA damage response and apoptosis. Coordinates actin remodeling through tyrosine phosphorylation of proteins controlling cytoskeleton dynamics like WASF3 (involved in branch formation); ANXA1 (involved in membrane anchoring); DBN1, DBNL, CTTN, RAPH1 and ENAH (involved in signaling); or MAPT and PXN (microtubule-binding proteins). Phosphorylation of WASF3 is critical for the stimulation of lamellipodia formation and cell migration. Involved in the regulation of cell adhesion and motility through phosphorylation of key regulators of these processes such as BCAR1, CRK, CRKL, DOK1, EFS or NEDD9.

**Purity:** >95% as determined by SDS-PAGE.

**Endotoxin:** Less than 1.0 EU per µg by the LAL method.

**Fragment region:** ABL1/JTK7/p150 (611-947)

**Source:** HEK293

**Accession:** P00519

**Predicted molecular mass:** 37.4 kD

**Formulation:** Lyophilized from a 0.2 µm filtered solution of PBS, pH7.4, 5% Trehalose, 5% mannitol.

**Reconstitution:** Reconstitute at 250 µg/ml in sterile water.

**Storage:** Please avoid repeated freeze-thaw cycles. Samples are stable for up to twelve months from date of receipt at -20°C to -80°C. It is recommended that aliquot the reconstituted solution to minimize freeze-thaw cycles.

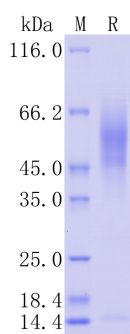
Hangzhou Huaan Biotechnology Co., Ltd.

Orders:0086-571-88062880

Technical:0086-571-89986345

Service mail:support@huabio.cn

 华安生物  
HUABIO  
www.huabio.cn



**Fig1:** Protein on SDS-PAGE under reducing (R) condition.

---

**Note:** All products are "FOR RESEARCH USE ONLY AND ARE NOT INTENDED FOR DIAGNOSTIC OR THERAPEUTIC USE".

---