

# Human Prolactin/PRL, C-His, Flag Tag Protein

## HA210676



|  |  |
|--|--|
| <b>Product name:</b>                     | Human Prolactin/PRL, C-His, Flag Tag   |
| <b>Species reactivity:</b>               | Human  |
| <b>Bio-Activity:</b>                     | Testing in progress.   |
| <b>Protein construction description:</b> | A DNA sequence encoding the human Prolactin/PRL protein (P01236) (Leu 29-Cys 227) was expressed with both His, Flag tag at the C-terminus. |

**Background:** This gene encodes the anterior pituitary hormone prolactin. This secreted hormone is a growth regulator for many tissues, including cells of the immune system. It may also play a role in cell survival by suppressing apoptosis, and it is essential for lactation. Alternative splicing results in multiple transcript variants that encode the same protein. Prolactin acts primarily on the mammary gland by promoting lactation.

**Purity:** >95% as determined by SDS-PAGE.

**Endotoxin:** Less than 1.0 EU per µg by the LAL method.

**Fragment region:** Prolactin/PRL (29-227)

**Source:** HEK293

**Accession:** P01236

**Predicted molecular mass:** 25.6 kD

**Formulation:** Lyophilized from a 0.2 µm filtered solution of PBS, pH7.4, 5% Trehalose, 5% mannitol.

**Reconstitution:** Reconstitute at 250 µg/ml in sterile water.

**Storage:** Please avoid repeated freeze-thaw cycles. Samples are stable for up to twelve months from date of receipt at -20°C to -80°C. It is recommended that aliquot the reconstituted solution to minimize freeze-thaw cycles.

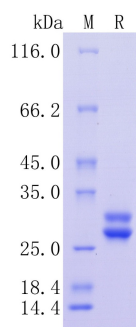
Hangzhou Huaan Biotechnology Co., Ltd.

Orders:0086-571-88062880

Technical:0086-571-89986345

Service mail:support@huabio.cn

 华安生物  
HUABIO  
www.huabio.cn



**Fig1:** Protein on SDS-PAGE under reducing (R) condition.

**Note:** All products are "FOR RESEARCH USE ONLY AND ARE NOT INTENDED FOR DIAGNOSTIC OR THERAPEUTIC USE".