

## Human CDCP1/CD318, N-Twin Strep, C-His, Flag Tag Protein

HA210664



<b>Product name:</b>	Human CDCP1/CD318, N-Twin Strep, C-His, Flag Tag
<b>Species reactivity:</b>	Human
<b>Bio-Activity:</b>	Testing in progress.
<b>Protein construction description:</b>	A DNA sequence encoding the human CDCP1/CD318 protein (Q9H5V8) (Cys 689-Glu 836) was expressed with a Twin strep tag at the N-terminus and both His, Flag tag at the C-terminus.
<b>Background:</b>	This gene encodes a transmembrane protein which contains three extracellular CUB domains and acts as a substrate for Src family kinases. The protein plays a role in the tyrosine phosphorylation-dependent regulation of cellular events that are involved in tumor invasion and metastasis. Alternative splicing results in multiple transcript variants of this gene. May be involved in cell adhesion and cell matrix association. May play a role in the regulation of anchorage versus migration or proliferation versus differentiation via its phosphorylation. May be a novel marker for leukemia diagnosis and for immature hematopoietic stem cell subsets. Belongs to the tetraspanin web involved in tumor progression and metastasis.
<b>Purity:</b>	>95% as determined by SDS-PAGE.
<b>Endotoxin:</b>	Less than 1.0 EU per µg by the LAL method.
<b>Fragment region:</b>	CDCP1/CD318 (689-836)
<b>Source:</b>	E.coli
<b>Accession:</b>	Q9H5V8
<b>Predicted molecular mass:</b>	23 kD
<b>Formulation:</b>	Lyophilized from a 0.2 µm filtered solution of PBS, pH7.4, 5% Trehalose, 5% mannitol.
<b>Reconstitution:</b>	Reconstitute at 250 µg/ml in sterile water.
<b>Storage:</b>	Please avoid repeated freeze-thaw cycles. Samples are stable for up to twelve months from date of receipt at -20°C to -80°C. It is recommended that aliquot the reconstituted solution to minimize freeze-thaw cycles.

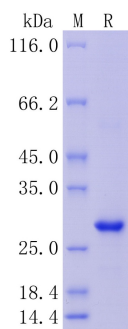
Hangzhou Huaan Biotechnology Co., Ltd.

Orders:0086-571-88062880

Technical:0086-571-89986345

Service mail:support@huabio.cn

 华安生物  
HUABIO  
www.huabio.cn



**Fig1:** Protein on SDS-PAGE under reducing (R) condition.

---

**Note:** All products are "FOR RESEARCH USE ONLY AND ARE NOT INTENDED FOR DIAGNOSTIC OR THERAPEUTIC USE".

---