

# Human MMP8/CLG1, C-His, Flag Tag Protein

HA210646



<b>Product name:</b>	Human MMP8/CLG1, C-His, Flag Tag
<b>Species reactivity:</b>	Human
<b>Bio-Activity:</b>	Testing in progress.
<b>Protein construction description:</b>	A DNA sequence encoding the human MMP8/CLG1 protein (P22894) (Phe 21-Gly 467) was expressed with a Flag tag at the C-terminus.

**Background:** This gene encodes a member of the matrix metalloproteinase (MMP) family of proteins. These proteins are involved in the breakdown of extracellular matrix in embryonic development, reproduction, and tissue remodeling, as well as in disease processes, such as arthritis and metastasis. Proteolysis at different sites on this protein results in multiple active forms of the enzyme with distinct N-termini. This protein functions in the degradation of type I, II and III collagens. The gene is part of a cluster of MMP genes which localize to chromosome 11q22.3. Alternative splicing results in multiple transcript variants.

**Purity:** >95% as determined by SDS-PAGE.

**Endotoxin:** Less than 1.0 EU per µg by the LAL method.

**Fragment region:** MMP8/CLG1 (21-467)

**Source:** HEK293

**Accession:** P22894

**Predicted molecular mass:** 53.8 kD

**Formulation:** Lyophilized from a 0.2 µm filtered solution of PBS, pH7.4, 5% Trehalose, 5% mannitol.

**Reconstitution:** Reconstitute at 250 µg/ml in sterile water.

**Storage:** Please avoid repeated freeze-thaw cycles. Samples are stable for up to twelve months from date of receipt at -20°C to -80°C. It is recommended that aliquot the reconstituted solution to minimize freeze-thaw cycles.

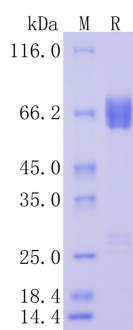
Hangzhou Huaan Biotechnology Co., Ltd.

Orders:0086-571-88062880

Technical:0086-571-89986345

Service mail:support@huabio.cn

 华安生物  
HUABIO  
www.huabio.cn



**Fig1:** Protein on SDS-PAGE under reducing (R) condition.

---

**Note:** All products are "FOR RESEARCH USE ONLY AND ARE NOT INTENDED FOR DIAGNOSTIC OR THERAPEUTIC USE".

---