

Human SCF/KITLG, C-His Tag (ECD) Protein

HA210618



Product name:	Human SCF/KITLG, C-His Tag (ECD)
Species reactivity:	Human
Bio-Activity:	Testing in progress.
Protein construction description:	A DNA sequence encoding the human SCF/KITLG protein (P21583) (Glu 26-His 214) was expressed with a His tag at the C-terminus.

Background: Ligand for the receptor-type protein-tyrosine kinase KIT. Plays an essential role in the regulation of cell survival and proliferation, hematopoiesis, stem cell maintenance, gametogenesis, mast cell development, migration and function, and in melanogenesis. KITLG/SCF binding can activate several signaling pathways. Promotes phosphorylation of PIK3R1, the regulatory subunit of phosphatidylinositol 3-kinase, and subsequent activation of the kinase AKT1. KITLG/SCF and KIT also transmit signals via GRB2 and activation of RAS, RAF1 and the MAP kinases MAPK1/ERK2 and/or MAPK3/ERK1. KITLG/SCF and KIT promote activation of STAT family members STAT1, STAT3 and STAT5. KITLG/SCF and KIT promote activation of PLCG1, leading to the production of the cellular signaling molecules diacylglycerol and inositol 1,4,5-trisphosphate. KITLG/SCF acts synergistically with other cytokines, probably interleukins.

Purity: >95% as determined by SDS-PAGE.

Endotoxin: Less than 1.0 EU per µg by the LAL method.

Fragment region: SCF/KITLG (26-214)

Source: HEK293

Accession: P21583

Predicted molecular mass: 22.4 kD

Formulation: Lyophilized from a 0.2 µm filtered solution of PBS, pH7.4, 5% Trehalose, 5% mannitol.

Reconstitution: Reconstitute at 250 µg/ml in sterile water.

Storage: Please avoid repeated freeze-thaw cycles. Samples are stable for up to twelve months from date of receipt at -20°C to -80°C. It is recommended that aliquot the reconstituted solution to minimize freeze-thaw cycles.

Hangzhou Huaan Biotechnology Co., Ltd.

Orders:0086-571-88062880

Technical:0086-571-89986345

Service mail:support@huabio.cn

 华安生物
HUABIO
www.huabio.cn

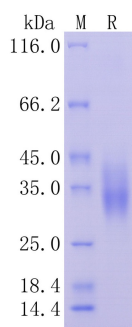


Fig1: Protein on SDS-PAGE under reducing (R) condition.

Note: All products are "FOR RESEARCH USE ONLY AND ARE NOT INTENDED FOR DIAGNOSTIC OR THERAPEUTIC USE".
