

Human IMMT/Mitofilin, C-His Tag Protein

HA210532



Product name:	Human IMMT/Mitofilin, C-His Tag
Species reactivity:	Human
Bio-Activity:	Testing in progress.
Protein construction description:	A DNA sequence encoding the human IMMT/Mitofilin protein (Q16891) (Arg 195-Glu 379) was expressed with a His tag at the C-terminus.

Background: Mitochondrial inner membrane protein is a protein that in humans is encoded by the IMMT gene. IMMT encodes an inner mitochondrial membrane (IMM) protein in the nucleus. It is posttranslational transported to the IMM. Mic60/Mitofilin (encoded by the IMMT gene) is a core subunit of the MICOS-complex, directly located next to cristae junctions (CJ). Human Mic60 exists in two isoforms of different size, anchored to the IMM via its N-terminus, while most of the protein is located to the inner mitochondrial space (IMS). Mic60 is evolutionary one of the oldest MICOS subunits as homologous were found in anaerobic prokaryotes. It is mainly present in two isoforms (ca. 88 and 90 kDa). In the brain, four isoforms are known, which differ in their isoelectric point due to different post-translational modifications. The amino terminus of Mic60 is anchored in the IM, while most of the protein is extended to the IMS. C-terminal Mic60 has a conserved mitofilin domain which is crucial for building the MICOS-complex. A central coiled-coil domain is required to enable protein-protein interactions.

Purity:	>95% as determined by SDS-PAGE.
Endotoxin:	Less than 1.0 EU per µg by the LAL method.
Fragment region:	IMMT/Mitofilin (195-379)
Source:	E.coli
Accession:	Q16891
Predicted molecular mass:	22 kD
Formulation:	Lyophilized from a 0.2 µm filtered solution of PBS, pH7.4, 5% Trehalose, 5% mannitol.
Reconstitution:	Reconstitute at 250 µg/ml in sterile water.
Storage:	Please avoid repeated freeze-thaw cycles. Samples are stable for up to twelve months from date of receipt at -20°C to -80°C. It is recommended that aliquot the reconstituted solution to minimize freeze-thaw cycles.

Hangzhou Huaan Biotechnology Co., Ltd.

Orders:0086-571-88062880

Technical:0086-571-89986345

Service mail:support@huabio.cn

华安生物
HUABIO
www.huabio.cn

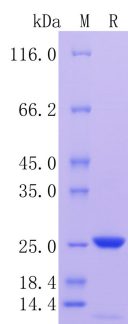


Fig1: Protein on SDS-PAGE under reducing (R) condition.

Note: All products are "FOR RESEARCH USE ONLY AND ARE NOT INTENDED FOR DIAGNOSTIC OR THERAPEUTIC USE".