

# Human Sorcin/SRI, N-Twin Strep, C-His, Flag Tag Protein

## HA210501



<b>Product name:</b>	Human Sorcin/SRI, N-Twin Strep, C-His, Flag Tag
<b>Species reactivity:</b>	Human
<b>Bio-Activity:</b>	Testing in progress.
<b>Protein construction description:</b>	A DNA sequence encoding the human Sorcin/SRI protein (P30626) (Met 1-Val 198) was expressed with a Twin strep tag at the N-terminus and both His, Flag tag at the C-terminus.
<b>Background:</b>	Calcium-binding protein that modulates excitation-contraction coupling in the heart. Contributes to calcium homeostasis in the heart sarcoplasmic reticulum. Modulates the activity of RYR2 calcium channels.
<b>Purity:</b>	>90% as determined by SDS-PAGE.
<b>Endotoxin:</b>	Less than 1.0 EU per µg by the LAL method.
<b>Fragment region:</b>	Sorcin/SRI (1-198)
<b>Source:</b>	E.coli
<b>Accession:</b>	P30626
<b>Predicted molecular mass:</b>	28.3 kD
<b>Formulation:</b>	Lyophilized from a 0.2 µm filtered solution of PBS, pH7.4, 5% Trehalose, 5% mannitol.
<b>Reconstitution:</b>	Reconstitute at 250 µg/ml in sterile water.
<b>Storage:</b>	Please avoid repeated freeze-thaw cycles. Samples are stable for up to twelve months from date of receipt at -20°C to -80°C. It is recommended that aliquot the reconstituted solution to minimize freeze-thaw cycles.

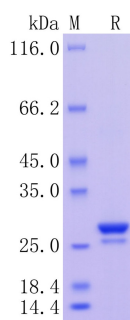
Hangzhou Huaan Biotechnology Co., Ltd.

Orders:0086-571-88062880

Technical:0086-571-89986345

Service mail:support@huabio.cn

 华安生物  
HUABIO  
www.huabio.cn



**Fig1:** Protein on SDS-PAGE under reducing (R) condition.

**Note:** All products are "FOR RESEARCH USE ONLY AND ARE NOT INTENDED FOR DIAGNOSTIC OR THERAPEUTIC USE".