

Human PD-1/PDCD1 Protein

HA210219



Product name:	Human PD-1/PDCD1 Protein
Species reactivity:	Human
Protein construction description:	Recombinant Human PD-1/PDCD1 Protein is expressed from HEK293 with hFc tag at the C-Terminus. It contains Leu25-Gln167.
Background:	Programmed cell death protein 1, also known as PD-1 and CD279, is a protein found on the surface of cells that has a role in regulating the immune system's response to the cells of the human body by down-regulating the immune system and promoting self tolerance by suppressing T cell inflammatory activity.
Purity:	> 95% as determined by Tris-Bis PAGE > 95% as determined by HPLC
Endotoxin:	Less than 1EU per µg by the LAL method.
Source:	HEK293
Accession:	Q15116-1
Predicted molecular mass:	The protein has a predicted MW of 42.6 kDa. Due to glycosylation, the protein migrates to 65-72 kDa based on Tris-Bis PAGE result.
Formulation:	Lyophilized from 0.22µm filtered solution in PBS (pH 7.4). Normally 8% trehalose is added as protectant before lyophilization.
Reconstitution:	Centrifuge the tube before opening. Reconstituting to a concentration more than 100 µg/ml is recommended. Dissolve the lyophilized protein in distilled water.
Storage:	-20 to -80°C for 12 months as supplied from date of receipt.

Hangzhou Huaan Biotechnology Co., Ltd.

Orders:0086-571-88062880

Technical:0086-571-89986345

Service mail:support@huabio.cn

 华安生物
HUABIO
www.huabio.cn

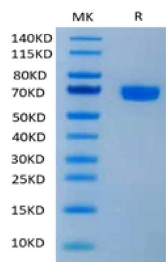


Fig1: Human PD-1 on Tris-Bis PAGE under reduced. The purity is greater than 95%.

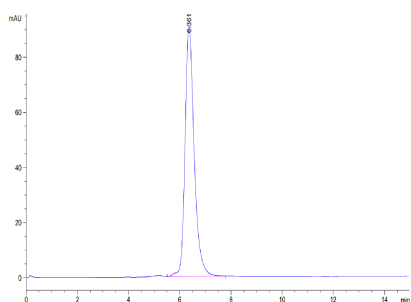


Fig2: The purity of Human PD-1 is greater than 95% as determined by SEC-HPLC.

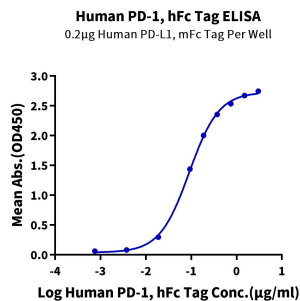


Fig3: Immobilized Human PD-L1, mFc Tag at 2µg/ml (100µl/well) on the plate. Dose response curve for Human PD-1, hFc Tag with the EC50 of 90.5ng/ml determined by ELISA (QC Test).

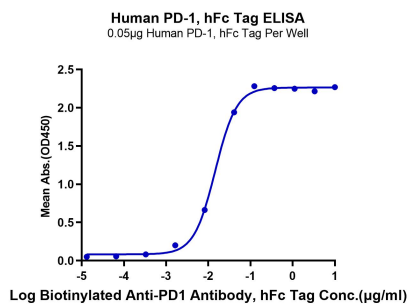


Fig4: Immobilized Human PD-1, hFc Tag at 0.5µg/ml (100µl/Well). Dose response curve for Biotinylated Anti-PD1 Antibody, hFc Tag with the EC50 of 14.6ng/ml determined by ELISA.

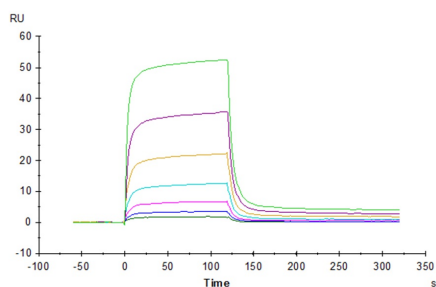


Fig5: Human PD-1, hFc Tag captured on CM5 Chip via Protein A can bind Biotinylated Human PD-L2, His-Avi Tag with an affinity constant of 0.344 μ M as determined in SPR assay (Biacore T200).

Note: All products are “FOR RESEARCH USE ONLY AND ARE NOT INTENDED FOR DIAGNOSTIC OR THERAPEUTIC USE”.

Hangzhou Huaan Biotechnology Co., Ltd.

Orders:0086-571-88062880

Technical:0086-571-89986345

Service mail:support@huabio.cn

华安生物
HUABIO
www.huabio.cn

Applications:WB=Western blot IHC-P=Immunohistochemistry (paraffin) IF-Cell=Immunofluorescence (Cell) IF-Tissue=Immunofluorescence (Tissue) FC=Flow cytometry IP=Immunoprecipitation