

Human MCP-1/CCL2 Protein

HA210031



Product name:	Human MCP-1/CCL2 Protein
Catalog No.:	HA210031
Purity:	> 95% as determined by Bis-Tris PAGE. > 95% as determined by HPLC.
Endotoxin:	Less than 1 EU per ug by the LAL method.
Formulation:	Supplied as 0.22um filtered solution in PBS (pH 7.4).

Background: Monocyte chemoattractant protein-1 (MCP-1) (also referred to as chemokine (C-C motif) ligand 2 (CCL2)) is expressed by mainly inflammatory cells and endothelial cells. MCP-1 has been reported to play an important role in the pathogenesis of atherosclerosis and considerable evidence supports that the monocyte containing MCPs and macrophage influences the growth of other cell types within the atherosclerotic lesion. This review will focus on the general structure features of MCP-1 and its role in atherosclerosis.

Source: Recombinant Human MCP-1/CCL2 is expressed from mammalian with a His Tag and Avi Tag at the C-terminal. It contains Gln24-Thr99.

Tag: C-His-Avi

Storage: The product should be stored at -70°C. Please do not repeated freeze-thaw cycles.

Hangzhou HuaAn Biotechnology Co.,Ltd.

Orders: 0086-571-88062880

Technical:0086-571-89986345

Service mail: support@huabio.cn

www.huabio.cn



Applications: WB=Western blot IP=Immunoprecipitation IHC=Immunohistochemistry IF=Immunofluorescence FC=Flow cytometry

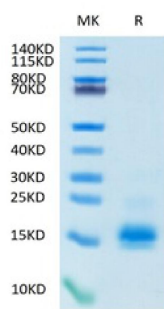


Fig1: Recombinant Human MCP-1 Protein on Tris-Bis PAGE under reduced condition. The purity is greater than 95%.

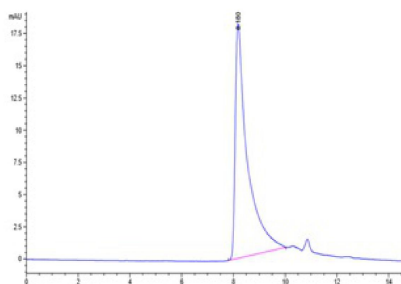


Fig2: The purity of Recombinant Human MCP-1 Protein is greater than 95% as determined by SEC-HPLC.

Note: All products are "FOR RESEARCH USE ONLY AND ARE NOT INTENDED FOR DIAGNOSTIC OR THERAPEUTIC USE".