

## HRP Conjugated Alpaca anti-Rabbit IgG Fc, Recombinant VHH monoclonal Antibody

# HA1031



**Product Type:** Alpaca monoclonal IgG, secondary antibodies

**Species reactivity:** Rabbit

**Applications:** IP, ELISA, IHC-P, WB

**Description:** Higher resolution imaging due to the Alpaca anti-rabbit IgG Fc, recombinant VHHs' 10 times smaller size than conventional secondary antibodies. The small size enables better tissue penetration, antigen access and decreases the distance between the epitope and label.

**Conjugate:** HRP-conjugated

**Immunogen:** Fc region of Rabbit IgG.

### Recommended Dilutions:

IP	Use at an assay dependent concentration.
ELISA	1:5,000-1:20,000
IHC-P	1:100-1:500
WB	1:50,000-1:100,000

**Storage Buffer:** 1\*PBS (pH7.4), 0.5% BSA, 50% Glycerol.

**Storage Instruction:** Store at +4℃ after thawing. Aliquot store at -20℃. Avoid repeated freeze / thaw cycles.

**Purity:** Immunogen affinity purified.

Hangzhou Huaan Biotechnology Co., Ltd.

Orders:0086-571-88062880

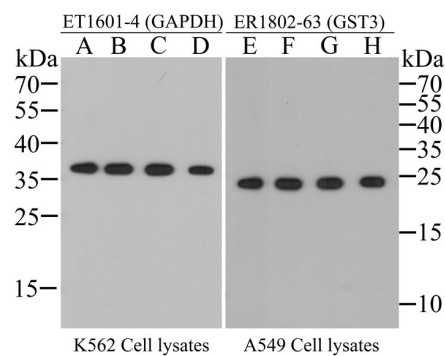
Technical:0086-571-89986345

Service mail:support@huabio.cn

 华安生物  
HUABIO  
www.huabio.cn

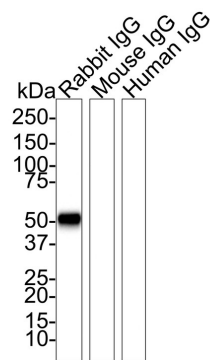
Applications:WB=Western blot IHC-P=Immunohistochemistry (paraffin) IF-Cell=Immunofluorescence (Cell) IF-Tissue=Immunofluorescence (Tissue) FC=Flow cytometry IP=Immunoprecipitation

Images



**Fig1:** Western blot analysis of rabbit anti-GAPDH antibody (ET1601-4,1/2000) and rabbit anti-GST3 antibody (ER1802-63, 1/1000) with K562 Cell and A549 Cell lysates (All lanes proteins at 10  $\mu$ g per lane). Proteins were transferred to a PVDF membrane and blocked with 5% BSA in PBS for 1 hour at room temperature. The primary antibody was used in 5% BSA at room temperature for 2 hours. Alpaca anti-rabbit IgG Fc, recombinant VHH (HRP) (HA1031) was used for 1 hour at room temperature at 1:40,000 (Lane A, E), 1:80,000 (Lane B, F), 1:160,000 (Lane C, G) and 1:320,000 (Lane D, H).

Exposure time: 30 seconds

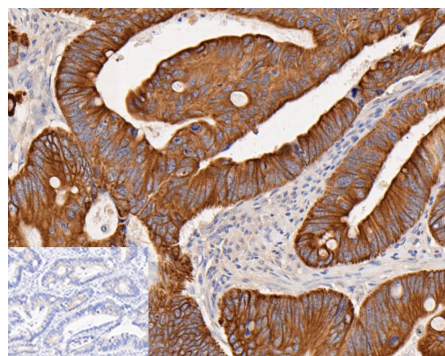


**Fig2:** The Cross-reactions of the secondary antibody (HA1031) with Rabbit IgG, Mouse IgG and Human IgG.

Proteins were transferred to a PVDF membrane and blocked with 5% NFDM/TBST for 1 hour at room temperature. Alpaca anti-Rabbit IgG FC, Recombinant VHH (HRP) (HA1031) was used for 1 hour at room temperature at 1/50,000.

Lane 1: Rabbit IgG (50 ng/Lane)  
Lane 2: Mouse IgG (50 ng/Lane)  
Lane 3: Human IgG (50 ng/Lane)

Exposure time: 10 seconds.



**Fig3:** Immunohistochemical analysis of paraffin-embedded human Colorectal cancer tissue using rabbit anti-Cytokeratin 18 antibody.

The section was pre-treated using heat mediated antigen retrieval with Tris-EDTA buffer (pH 8.0-8.4) for 20 minutes. The tissues were blocked in 5% BSA for 30 minutes at room temperature, washed with ddH<sub>2</sub>O and PBS, and then probed with the primary antibody (ET1603-8, 1/200 dilution) for 30 minutes at room temperature. Alpaca anti-rabbit IgG Fc, recombinant VHH (HRP) (HA1031, 1/200 dilution) was used for 30 min at room temperature. Tissues were counterstained with hematoxylin and mounted with DPX.

The inset negative control image is secondary-only at 1/200 dilution.

Hangzhou Huaan Biotechnology Co., Ltd.

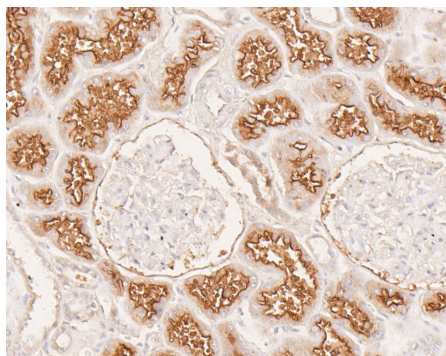
Orders:0086-571-88062880

Technical:0086-571-89986345

Service mail:support@huabio.cn

华安生物  
HUABIO  
www.huabio.cn

Applications:WB=Western blot IHC-P=Immunohistochemistry (paraffin) IF-Cell=Immunofluorescence (Cell) IF-Tissue=Immunofluorescence (Tissue) FC=Flow cytometry IP=Immunoprecipitation



**Fig4:** Immunohistochemical analysis of paraffin-embedded human Kidney tissue using rabbit anti-CD13 antibody.

The section was pre-treated using heat mediated antigen retrieval with Tris-EDTA buffer (pH 8.0-8.4) for 20 minutes. The tissues were blocked in 5% BSA for 30 minutes at room temperature, washed with ddH<sub>2</sub>O and PBS, and then probed with the primary antibody (ER1803-45, 1/200) for 30 minutes at room temperature. Alpaca anti-rabbit IgG Fc, recombinant VHH (HRP) (HA1031, 1/200 dilution) was used for 30 min at room temperature. Tissues were counterstained with hematoxylin and mounted with DPX.

**Note:** All products are "FOR RESEARCH USE ONLY AND ARE NOT INTENDED FOR DIAGNOSTIC OR THERAPEUTIC USE".