

# Anti-EGR2 Antibody [JG78-39]

ET7108-57



<b>Product Type:</b>	Recombinant Rabbit monoclonal IgG, primary antibodies
<b>Species reactivity:</b>	Human, Mouse, Rat
<b>Applications:</b>	WB
<b>Molecular Wt:</b>	Predicted band size: 50 kDa
<b>Clone number:</b>	JG78-39

**Description:** The protein encoded by this gene is a transcription factor with three tandem C2H2-type zinc fingers. Binds to two specific DNA sites located in the promoter region of HOXA4. E3 SUMO-protein ligase helping SUMO1 conjugation to its coregulators NAB1 and NAB2, whose sumoylation down-regulates EGR2 own transcriptional activity. Defects in this gene are associated with Charcot-Marie-Tooth disease type 1D (CMT1D), Charcot-Marie-Tooth disease type 4E (CMT4E), and with Dejerine-Sottas syndrome (DSS). Multiple transcript variants encoding two different isoforms have been found for this gene.

**Immunogen:** Recombinant protein within Human EGR2 aa 2-96 / 476.

**Positive control:** SH-SY5Y cell lysate, HepG2 cell lysate, Daudi cell lysate, RAW264.7 cell lysate, PC-12 cell lysate.

**Subcellular location:** Nucleus.

**Database links:** SwissProt: P11161 Human

**Recommended Dilutions:**

**WB** 1:500-1:1,000

**Storage Buffer:** 1\*TBS (pH7.4), 0.05% BSA, 40% Glycerol. Preservative: 0.05% Sodium Azide.

**Storage Instruction:** Shipped at 4°C. Store at +4°C short term (1-2 weeks). It is recommended to aliquot into single-use upon delivery. Store at -20°C long term.

**Purity:** Protein A affinity purified.

Hangzhou Huaan Biotechnology Co., Ltd.

Orders: 0086-571-88062880

Technical: 0086-571-89986345

Service mail: support@huabio.cn

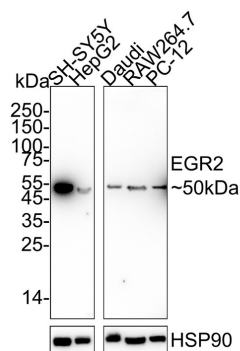
华安生物  
HUABIO  
www.huabio.cn

Applications: WB=Western blot IHC-P=Immunohistochemistry (paraffin) IF-Cell=Immunofluorescence (Cell) IF-Tissue=Immunofluorescence (Tissue) FC=Flow cytometry IP=Immunoprecipitation

## Images

**Fig1:** Western blot analysis of EGR2 on different lysates with Rabbit anti-EGR2 antibody (ET7108-57) at 1/1,000 dilution.

Lane 1: SH-SY5Y cell lysate  
 Lane 2: HepG2 cell lysate  
 Lane 3: Daudi cell lysate  
 Lane 4: RAW264.7 cell lysate  
 Lane 5: PC-12 cell lysate



Lysates/proteins at 20 µg/Lane.

Predicted band size: 50 kDa

Observed band size: 50 kDa

Exposure time: 40 seconds;

4-20% SDS-PAGE gel.

Proteins were transferred to a PVDF membrane and blocked with 5% NFDM/TBST for 1 hour at room temperature. The primary antibody (ET7108-57) at 1/1,000 dilution was used in 5% NFDM/TBST at 4°C overnight. Goat Anti-Rabbit IgG - HRP Secondary Antibody (HA1001) at 1/50,000 dilution was used for 1 hour at room temperature.

**Note:** All products are "FOR RESEARCH USE ONLY AND ARE NOT INTENDED FOR DIAGNOSTIC OR THERAPEUTIC USE".

### Background References

1. Garcia-Gutierrez P. et al. The transcription factor Krox20 is an E3 ligase that sumoylates its Nab coregulators. EMBO Rep. 12:1018-1023(2011).
2. Funalot B. et al. Homozygous deletion of an EGR2 enhancer in congenital amyelinating neuropathy. Ann. Neurol. 71:719-723(2012).

Hangzhou Huaan Biotechnology Co., Ltd.

Orders:0086-571-88062880

Technical:0086-571-89986345

Service mail:support@huabio.cn

华安生物  
HUABIO  
www.huabio.cn

Applications:WB=Western blot IHC-P=Immunohistochemistry (paraffin) IF-Cell=Immunofluorescence (Cell) IF-Tissue=Immunofluorescence (Tissue) FC=Flow cytometry IP=Immunoprecipitation