

Anti-Cullin 2 Antibody [JG72-31]

ET7108-47



Product Type:	Recombinant Rabbit monoclonal IgG, primary antibodies
Species reactivity:	Human, Mouse, Rat
Applications:	WB, IHC-P, IP
Molecular Wt:	89 kDa
Clone number:	JG72-31

Description: Cullin proteins comprise a distinct family of mediators that participate in the selective targeting of proteins for ubiquitin (Ub)-mediated proteolysis. CUL-1, which is the mammalian homolog of yeast Cdc53, is an integral component of the E3 ubiquitin ligase complex designated SCF. The SCF (Skp1/CUL-1/F-box protein complex) consists of Skp1 associating with both CUL-1 and an F-box protein, such as Skp2, which determines the substrate specificity of the complex. CUL-1-mediated ubiquitination results in the degradation of cell cycle proteins cyclin D, p21 and cyclin E. Another cullin, CUL-3, facilitates the degradation of cyclin E independent of SCF activity, while CUL-2 associates with the tumor suppressing protein VHL and elongin B to form VBC complexes, which structurally resemble the SCF ligase. Proteolysis also occurs by way of CUL-4 associating with Nedd-8, a ubiquitin-like protein, where it too functions as an active component of a multifunctional E3 complex.

Immunogen: Synthetic peptide within N-terminal Human Cullin 2 .

Positive control: PC-3M cell lysate, k562 tissue lysate, rat testis tissue, human tonsil tissue.

Subcellular location: Cytoplasm. Nucleus.

Database links: SwissProt: Q13617 Human | Q9D4H8 Mouse
Entrez Gene: 361258 Rat

Recommended Dilutions:

WB	1:500-1:2,000
IHC-P	1:50-1:200
IP	1:10-1:50

Storage Buffer: 1*TBS (pH7.4), 0.05% BSA, 40% Glycerol. Preservative: 0.05% Sodium Azide.

Storage Instruction: Store at +4°C after thawing. Aliquot store at -20°C. Avoid repeated freeze / thaw cycles.

Purity: Protein A affinity purified.



Hangzhou HuaAn Biotechnology Co.,Ltd.

Orders: 0086-571-88062880

Technical:0086-571-89986345

Service mail: support@huabio.cn

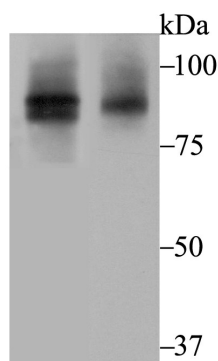
www.huabio.cn

Images

Fig1: Western blot analysis of Cullin 2 on different lysates with Rabbit anti-Cullin 2 antibody (ET7108-47) at 1/500 dilution.

Lane 1: PC-3M cell lysate

Lane 2: K562 tissue lysate (20 µg/Lane)



Lysates/proteins at 20 µg/Lane.

Predicted band size: 87 kDa

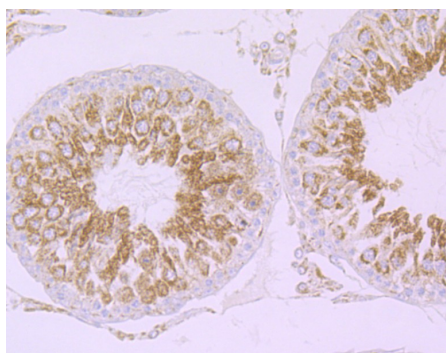
Observed band size: 92 kDa

Exposure time: 2 minutes;

10% SDS-PAGE gel.

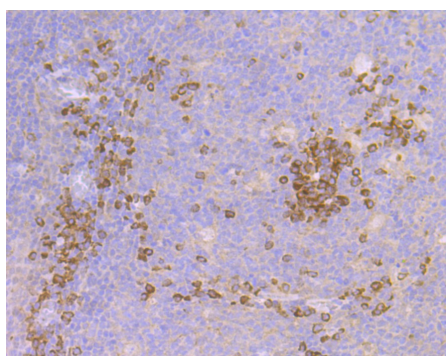
Proteins were transferred to a PVDF membrane and blocked with 5% NFDW/TBST for 1 hour at room temperature. The primary antibody (ET7108-47) at 1/500 dilution was used in 5% NFDW/TBST at room temperature for 2 hours. Goat Anti-Rabbit IgG - HRP Secondary Antibody (HA1001) at 1:300,000 dilution was used for 1 hour at room temperature.

Fig2: Immunohistochemical analysis of paraffin-embedded rat testis tissue with Rabbit anti-Cullin 2 antibody (ET7108-47) at 1/50 dilution.



The section was pre-treated using heat mediated antigen retrieval with Tris-EDTA buffer (pH 9.0) for 20 minutes. The tissues were blocked in 1% BSA for 20 minutes at room temperature, washed with ddH₂O and PBS, and then probed with the primary antibody (ET7108-47) at 1/50 dilution for 1 hour at room temperature. The detection was performed using an HRP conjugated compact polymer system. DAB was used as the chromogen. Tissues were counterstained with hematoxylin and mounted with DPX.

Fig3: Immunohistochemical analysis of paraffin-embedded human tonsil tissue with Rabbit anti-Cullin 2 antibody (ET7108-47) at 1/50 dilution.



The section was pre-treated using heat mediated antigen retrieval with Tris-EDTA buffer (pH 9.0) for 20 minutes. The tissues were blocked in 1% BSA for 20 minutes at room temperature, washed with ddH₂O and PBS, and then probed with the primary antibody (ET7108-47) at 1/50 dilution for 1 hour at room temperature. The detection was performed using an HRP conjugated compact polymer system. DAB was used as the chromogen. Tissues were counterstained with hematoxylin and mounted with DPX.

Note: All products are “FOR RESEARCH USE ONLY AND ARE NOT INTENDED FOR DIAGNOSTIC OR THERAPEUTIC USE”.

Background References

1. Pause A et al. The von Hippel-Lindau tumor-suppressor gene product forms a stable complex with human CUL-2, a member of the Cdc53 family of proteins. Proc Natl Acad Sci USA 94:2156-2161 (1997).
2. Kamura T et al. Activation of HIF1alpha ubiquitination by a reconstituted von Hippel-Lindau (VHL) tumor suppressor complex. Proc Natl Acad Sci USA 97:10430-10435 (2000).

Hangzhou HuaAn Biotechnology Co.,Ltd.

Orders: 0086-571-88062880

Technical:0086-571-89986345

Service mail: support@huabio.cn

www.huabio.cn



Applications: WB=Western blot IP=Immunoprecipitation IHC=Immunohistochemistry IF=Immunofluorescence FC=Flow cytometry