

Anti-Glucagon Antibody [JF33-10]

ET1702-59



Product Type:	Recombinant Rabbit monoclonal IgG, primary antibodies
Species reactivity:	Human, Mouse, Rat
Applications:	WB, IF-Cell, IF-Tissue, IHC-P
Molecular Wt:	Predicted band size: 21 kDa
Clone number:	JF33-10

Description: Glucagon is a pancreatic hormone that functions as an antagonist to insulin, stimulating the conversion of glycogen to glucose and increasing blood sugar levels. Glucagon-like peptide-1 (GLP-1), Glucagon-like peptide-2 (GLP-2), VIP (vasoactive intestinal peptide) and PACAP (pituitary adenylate cyclase activating polypeptide) are members of the Glucagon family of hormones. GLP-1 functions as a transmitter in the central nervous system, inhibiting feeding and drinking behavior, whereas GLP-2 is a stimulator of intestinal epithelial growth. VIP causes vasodilation resulting in the lowering of blood pressure. PACAP is abundant in the hypothalamus and has been shown to increase the synthesis of several hormones, including growth hormone.

Immunogen: Recombinant protein within human GLP1 aa 65-150.

Positive control: PC-12, SW480, human pancreas tissue.

Subcellular location: Secreted.

Database links: SwissProt: P01275 Human | P55095 Mouse | P06883 Rat

Recommended Dilutions:

WB	1;500-1:1,000
IF-Cell	1:50-1:200
IF-Tissue	1:100
IHC-P	1:50-1:200

Storage Buffer: 1*TBS (pH7.4), 0.05% BSA, 40% Glycerol. Preservative: 0.05% Sodium Azide.

Storage Instruction: Store at +4°C after thawing. Aliquot store at -20°C or -80°C. Avoid repeated freeze / thaw cycles.

Purity: Protein A affinity purified.

Hangzhou Huaan Biotechnology Co., Ltd.

Orders:0086-571-88062880

Technical:0086-571-89986345

Service mail:support@huabio.cn

 华安生物
HUABIO
www.huabio.cn

Images

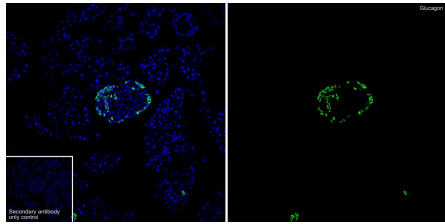


Fig1: Immunofluorescence analysis of paraffin-embedded mouse pancreas tissue labeling Glucagon with Rabbit anti-Glucagon antibody (ET1702-59) at 1/100 dilution.

The section was pre-treated using heat mediated antigen retrieval with Tris-EDTA buffer (pH 9.0) for 20 minutes. The tissues were blocked in 10% negative goat serum for 1 hour at room temperature, washed with PBS, and then probed with the primary antibody (ET1702-59, green) at 1/100 dilution overnight at 4 °C, washed with PBS. Goat Anti-Rabbit IgG H&L (iFluor™ 488, HA1121) was used as the secondary antibody at 1/1,000 dilution. Nuclei were counterstained with DAPI (blue).

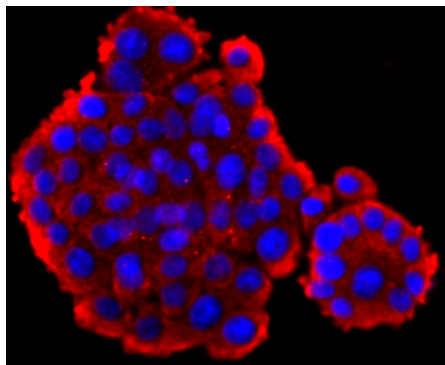


Fig2: ICC staining GLP1 in PC-12 cells (red). The nuclear counter stain is DAPI (blue). Cells were fixed in paraformaldehyde, permeabilised with 0.25% Triton X100/PBS.

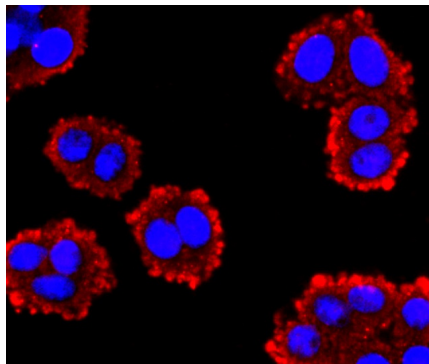


Fig3: ICC staining GLP1 in SW480 cells (red). The nuclear counter stain is DAPI (blue). Cells were fixed in paraformaldehyde, permeabilised with 0.25% Triton X100/PBS.

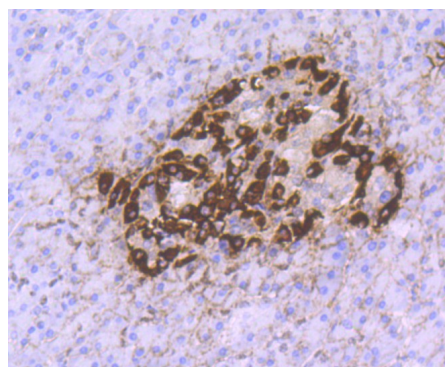


Fig4: Immunohistochemical analysis of paraffin-embedded human pancreas tissue using anti-GLP1 antibody. Counter stained with hematoxylin.

Hangzhou Huaan Biotechnology Co., Ltd.

Orders:0086-571-88062880

Technical:0086-571-89986345

Service mail:support@huabio.cn

华安生物
HUABIO
www.huabio.cn

Note: All products are "FOR RESEARCH USE ONLY AND ARE NOT INTENDED FOR DIAGNOSTIC OR THERAPEUTIC USE".

Background References

1. Takada Y et al. Brg1 plays an essential role in development and homeostasis of the duodenum through regulation of Notch signaling. *Development* 143:3532-3539 (2016).
2. Jiang S et al. AMPK-dependent regulation of GLP1 expression in L-like cells. *J Mol Endocrinol* 57:151-60 (2016).

Hangzhou Huaan Biotechnology Co., Ltd.

Orders:0086-571-88062880

Technical:0086-571-89986345

Service mail:support@huabio.cn

 华安生物
HUAABIO
www.huabio.cn