

# Anti-GFP Antibody [SR48-02]

ET1602-7



<b>Product Type:</b>	Recombinant Rabbit monoclonal IgG, primary antibodies
<b>Species reactivity:</b>	Species independent
<b>Applications:</b>	WB, IF-Cell, IF-Tissue, IHC-P, IP
<b>Molecular Wt:</b>	Predicted band size: 27 kDa
<b>Clone number:</b>	SR48-02

**Description:** Green fluorescence protein (GFP) is derived from the jellyfish *Aequorea victoria*, which emits green light (emission peak at a wavelength of 509 nm) when excited by blue light (excitation peak at a wavelength of 395 nm). GFP fluorescence is stable under fixation conditions and suitable for a variety of applications. It has been widely used as a reporter for gene expression, enabling researchers to visualize and localize GFP-tagged proteins within living cells without chemical staining.

**Immunogen:** Synthetic peptide within *Aequorea victoria* GFP aa 1-50 / 238.

**Positive control:** Recombinant GFP protein, GFP Tag fusion protein lysate.

**Database links:** SwissProt: P42212 *Aequorea victoria*

## Recommended Dilutions:

<b>WB</b>	1:5,000-1:10,000
<b>IHC-P</b>	1:200-1:500
<b>IF-Cell</b>	1:100-1:500
<b>IF-Tissue</b>	1:100-1:500
<b>IP</b>	2-5 µg/ml

**Storage Buffer:** 1\*TBS (pH7.4), 0.05% BSA, 40% Glycerol. Preservative: 0.05% Sodium Azide.

**Storage Instruction:** Store at +4°C after thawing. Aliquot store at -20°C or -80°C. Avoid repeated freeze / thaw cycles.

**Purity:** Protein A affinity purified.

Hangzhou Huaan Biotechnology Co., Ltd.

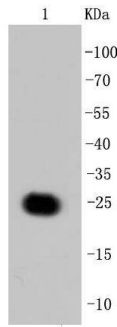
Orders:0086-571-88062880

Technical:0086-571-89986345

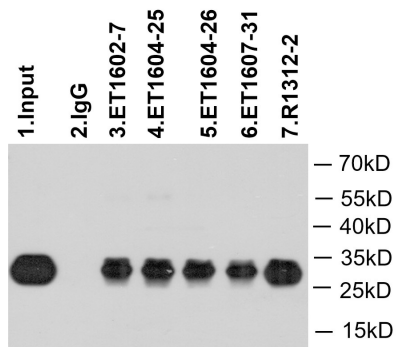
Service mail:support@huabio.cn

 华安生物  
HUABIO  
www.huabio.cn

## Images



**Fig1:** Western blot analysis of GFP on recombinant GFP protein using anti-GFP antibody at 1/5,000 dilution.



**Fig2:** GFP tag was immunoprecipitated in 5 $\mu$ g GFP Tag fusion protein lysate with ET1602-7 at 2  $\mu$ g/20  $\mu$ l agarose. Western blot was performed from the immunoprecipitate using M1004-8 at 1/1,000 dilution. Anti-Mouse IgG - HRP Secondary Antibody (HA1006) at 1/20,000 dilution was used for 60 mins at room temperature.

Lane 1: GFP Tag fusion protein lysate (input).

Lane 2: Rabbit IgG instead of ET1602-7 in GFP Tag fusion protein lysate.

Lane 3: ET1602-7 IP in GFP Tag fusion protein lysate.

Lane 4: ET1604-25 IP in GFP Tag fusion protein lysate.

Lane 5: ET1604-26 IP in GFP Tag fusion protein lysate.

Lane 6: ET1607-31 IP in GFP Tag fusion protein lysate.

Lane 7: R1312-2 IP in GFP Tag fusion protein lysate.

Blocking/Dilution buffer: 5% NFDM/TBST

**Note:** All products are "FOR RESEARCH USE ONLY AND ARE NOT INTENDED FOR DIAGNOSTIC OR THERAPEUTIC USE".

## Background References

1. "Primary structure of the Aequorea victoria green-fluorescent protein." Prasher D.C., Eckenrode V.K., Ward W.W., Prendergast F.G., Cormier M.J. *Gene* 111:229-233(1992).
2. "A molecular thermometer based on fluorescent protein blinking." Wong F.H., Banks D.S., Abu-Arish A., Fradin C.J. *Am. Chem. Soc.* 129:10302-10303(2007).

Hangzhou Huaan Biotechnology Co., Ltd.

Orders:0086-571-88062880

Technical:0086-571-89986345

Service mail:support@huabio.cn

华安生物  
HUABIO  
www.huabio.cn