

Anti-CD203c Antibody

ER65522



Product Type:	Rabbit polyclonal IgG, primary antibodies
Species reactivity:	Human, Mouse, Rat
Applications:	WB, IHC-P
Molecular Wt:	100 kDa

Description: The protein encoded by this gene belongs to a series of ectoenzymes that are involved in hydrolysis of extracellular nucleotides. These ectoenzymes possess ATPase and ATP pyrophosphatase activities and are type II transmembrane proteins. Expression of the related rat mRNA has been found in a subset of immature glial cells and in the alimentary tract. The corresponding rat protein has been detected in the pancreas, small intestine, colon, and liver. The human mRNA is expressed in glioma cells, prostate, and uterus. Expression of the human protein has been detected in uterus, basophils, and mast cells. Two transcript variants, one protein coding and the other non-protein coding, have been found for this gene.

Immunogen: The antiserum was produced against synthesized peptide derived from the Internal region of human ENPP3. AA range:281-330

Positive control: Endometrium,Prostate,

Database links: SwissProt: O14638 Human

Recommended Dilutions:

WB	1:500-1:2000
IHC-P	1:100-300

Storage Buffer: Liquid in PBS containing 50% glycerol, 0.5% BSA and 0.02% sodium azide.

Storage Instruction: Store at +4°C after thawing. Aliquot store at -20°C or -80°C. Avoid repeated freeze / thaw cycles.

Purity: Immunogen affinity purified.

Hangzhou HuaAn Biotechnology Co.,Ltd.

Orders: 0086-571-88062880

Technical:0086-571-89986345

Service mail: support@huabio.cn

www.huabio.cn



Images

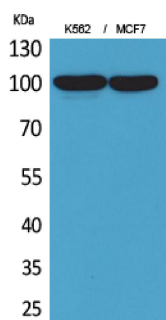


Fig1: Western Blot analysis of K562, MCF7 cells using CD203c Polyclonal Antibody. Antibody was diluted at 1:2000. Secondary antibody (catalog#: HA1001) was diluted at 1:20000

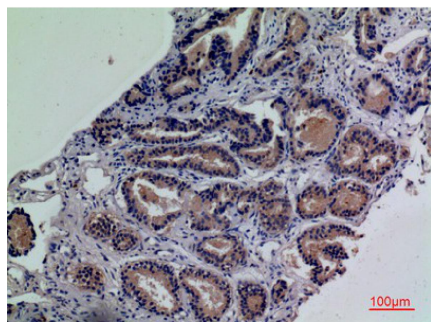


Fig2: Immunohistochemical analysis of paraffin-embedded human-prostate-cancer, antibody was diluted at 1:100

Note: All products are "FOR RESEARCH USE ONLY AND ARE NOT INTENDED FOR DIAGNOSTIC OR THERAPEUTIC USE".