

# Anti-Spectrin $\beta$ V Antibody

## ER65008



<b>Product Type:</b>	Rabbit polyclonal IgG, primary antibodies
<b>Species reactivity:</b>	Human
<b>Applications:</b>	IHC-P

**Description:** Belongs to the spectrin family. Contains 1 PH domain. Contains 2 CH (calponin-homology) domains. Contains 31 spectrin repeats. subcellular location:Detected prominently in the outer segments of photoreceptor rods and cones and in the basolateral membrane and cytosol of gastric epithelial cells. subunit:Probably associates with an alpha chain. tissue specificity:Expressed at very low levels in many tissues, with strongest expression in cerebellum, spinal cord, stomach, pituitary gland, liver, pancreas, salivary gland, kidney, bladder, and heart.

**Immunogen:** The antiserum was produced against synthesized peptide derived from human SPTBN5. AA range:481-530

**Positive control:** Cerebellum,Retina,Spinal cord,

**Database links:** SwissProt: Q9NRC6 Human

**Recommended Dilutions:**  
IHC-P 1:100-1:300

**Storage Buffer:** Liquid in PBS containing 50% glycerol, 0.5% BSA and 0.02% sodium azide.

**Storage Instruction:** Store at +4°C after thawing. Aliquot store at -20°C or -80°C. Avoid repeated freeze / thaw cycles.

**Purity:** Immunogen affinity purified.

Hangzhou HuaAn Biotechnology Co.,Ltd.

Orders: 0086-571-88062880

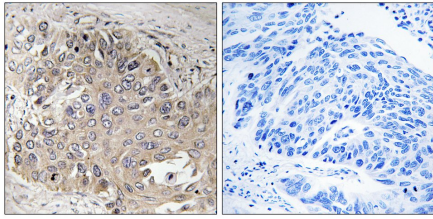
Technical:0086-571-89986345

Service mail: support@huabio.cn

www.huabio.cn



Images



**Fig1:** Immunohistochemistry analysis of paraffin-embedded human lung carcinoma, using SPTBN5 Antibody. The picture on the right is blocked with the synthesized peptide.

---

**Note:** All products are “FOR RESEARCH USE ONLY AND ARE NOT INTENDED FOR DIAGNOSTIC OR THERAPEUTIC USE”.

---