

# Anti-Smad2/3 Antibody

ER64981



<b>Product Type:</b>	Rabbit polyclonal IgG, primary antibodies
<b>Species reactivity:</b>	Human, Mouse, Rat, Monkey
<b>Applications:</b>	WB, IHC-P
<b>Molecular Wt:</b>	48 kDa

**Description:** The protein encoded by this gene belongs to the SMAD, a family of proteins similar to the gene products of the Drosophila gene 'mothers against decapentaplegic' (Mad) and the C. elegans gene Sma. SMAD proteins are signal transducers and transcriptional modulators that mediate multiple signaling pathways. This protein mediates the signal of the transforming growth factor (TGF)-beta, and thus regulates multiple cellular processes, such as cell proliferation, apoptosis, and differentiation. This protein is recruited to the TGF-beta receptors through its interaction with the SMAD anchor for receptor activation (SARA) protein. In response to TGF-beta signal, this protein is phosphorylated by the TGF-beta receptors. The phosphorylation induces the dissociation of this protein with SARA and the association with the family member SMAD4. The association with SMAD4 is important for the translocation

**Immunogen:** The antiserum was produced against synthesized peptide derived from human Smad2/3. AA range:1-50

**Positive control:** Chronic myeloid leukemia cell, Colon adenocarcinoma, Epithelium, Kidney, Pancreas, Place

**Database links:** SwissProt: Q15796 Human | P84022 Human

**Recommended Dilutions:**

<b>WB</b>	1:500-1:2000
<b>IHC-P</b>	1:100-1:300

**Storage Buffer:** Liquid in PBS containing 50% glycerol, 0.5% BSA and 0.02% sodium azide.

**Storage Instruction:** Store at +4°C after thawing. Aliquot store at -20°C or -80°C. Avoid repeated freeze / thaw cycles.

**Purity:** Immunogen affinity purified.



Hangzhou HuaAn Biotechnology Co.,Ltd.

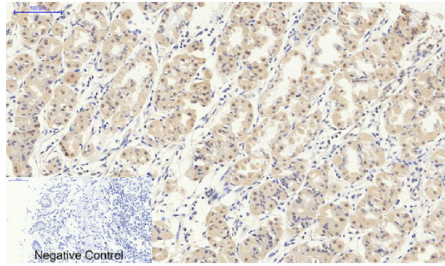
Orders: 0086-571-88062880

Technical:0086-571-89986345

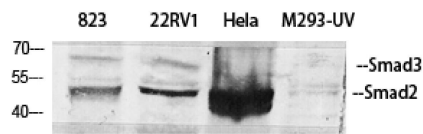
Service mail: support@huabio.cn

www.huabio.cn

## Images



**Fig1:** Immunohistochemical analysis of paraffin-embedded Human-stomach tissue. 1, Smad2/3 Polyclonal Antibody was diluted at 1:200(4°C, overnight). 2, Sodium citrate pH 6.0 was used for antibody retrieval(>98°C, 20min). 3, Secondary antibody was diluted at 1:200(room temperature, 30min). Negative control was used by secondary antibody only.



**Fig2:** Western Blot analysis of 823, 22RV1, HeLa, M293-UV cell lysate using Smad2/3 Polyclonal Antibody diluted at 1:500

**Note:** All products are "FOR RESEARCH USE ONLY AND ARE NOT INTENDED FOR DIAGNOSTIC OR THERAPEUTIC USE".