

Anti-Ribosomal Protein S21 Antibody

ER64856



Product Type: Rabbit polyclonal IgG, primary antibodies

Species reactivity: Human, Mouse, Rat

Applications: IHC-P

Description: Ribosomes, the organelles that catalyze protein synthesis, consist of a small 40S subunit and a large 60S subunit. Together these subunits are composed of 4 RNA species and approximately 80 structurally distinct proteins. This gene encodes a ribosomal protein that is a component of the 40S subunit. The protein belongs to the S21E family of ribosomal proteins. It is located in the cytoplasm. Alternative splice variants that encode different protein isoforms have been described, but their existence has not been verified. As is typical for genes encoding ribosomal proteins, there are multiple processed pseudogenes of this gene dispersed through the genome.

Immunogen: The antiserum was produced against synthesized peptide derived from human RPS21. AA range:31-80

Positive control: Blood cells,Brain,Pancreas,Placenta,T-cell,

Database links: SwissProt: P63220 Human

Recommended Dilutions:

IHC-P 1:100-1:300

Storage Buffer: Liquid in PBS containing 50% glycerol, 0.5% BSA and 0.02% sodium azide.

Storage Instruction: Store at +4℃ after thawing. Aliquot store at -20℃ or -80℃. Avoid repeated freeze / thaw cycles.

Purity: Immunogen affinity purified.

Hangzhou HuaAn Biotechnology Co.,Ltd.

Orders: 0086-571-88062880

Technical:0086-571-89986345

Service mail: support@huabio.cn

www.huabio.cn



Applications: WB=Western blot IP=Immunoprecipitation IHC=Immunohistochemistry IF=Immunofluorescence FC=Flow cytometry

Images

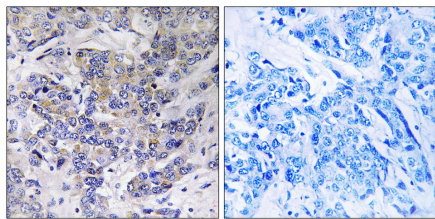


Fig1: Immunohistochemistry analysis of paraffin-embedded human breast carcinoma tissue, using RPS21 Antibody. The picture on the right is blocked with the synthesized peptide.

Note: All products are “FOR RESEARCH USE ONLY AND ARE NOT INTENDED FOR DIAGNOSTIC OR THERAPEUTIC USE”.
