

Anti-presenilin 1 Antibody

ER1915-40



Product Type:	Rabbit polyclonal IgG, primary antibodies
Species reactivity:	Human, Mouse, Rat, Dog, Pig, Cow, Rabbit
Applications:	WB, ELISA, IHC-P, FC, IF, ICC
Molecular Wt:	34/52 KDa

Description: Probable catalytic subunit of the gamma-secretase complex, an endoprotease complex that catalyzes the intramembrane cleavage of integral membrane proteins such as Notch receptors and APP (beta-amyloid precursor protein). Requires the other members of the gamma-secretase complex to have a protease activity. May play a role in intracellular signaling and gene expression or in linking chromatin to the nuclear membrane. Stimulates cell-cell adhesion through its association with the E-cadherin/catenin complex. Under conditions of apoptosis or calcium influx, cleaves E-cadherin promoting the disassembly of the E-cadherin/catenin complex and increasing the pool of cytoplasmic beta-catenin, thus negatively regulating Wnt signaling. May also play a role in hematopoiesis.

Immunogen: KLH conjugated synthetic peptide derived from human Presenilin-1 NTF subunit 10-80/467

Positive control: Expressed in a wide range of tissues including various regions of the brain, liver, spleen and lymph nodes.

Subcellular location: Endoplasmic reticulum membrane; Multi-pass membrane protein. Golgi apparatus membrane; Multi-pass membrane protein. Cell surface. Note=Bound to NOTCH1 also at the cell surface. Colocalizes with CDH1/2 at sites of cell-cell contact. Colocalizes with CTNNB1 in the endoplasmic reticulum and the proximity of the plasma membrane. Also present in azurophilic granules of neutrophils.

Database links: SwissProt: P49768 Human

Recommended Dilutions:

WB	1:500-2000
ELISA	1:5000-10000
IHC-P	1:100-500
FC	1ug/test
IF	1:100-500
ICC	1:100

Storage Buffer: 0.01M TBS(pH7.4) with 1% BSA, 0.03% Proclin300 and 50% Glycerol.

Storage Instruction: Store at -20°C for one year. Avoid repeated freeze/thaw cycles. The lyophilized antibody is stable at room temperature for at least one month and for greater than a year when kept at -20°C. When reconstituted in sterile pH 7.4 0.01M PBS or diluent of antibody the antibody is stable for at least two weeks at 2-4°C.

Purity: Protein A affinity purified.

Hangzhou Huaan Biotechnology Co., Ltd.

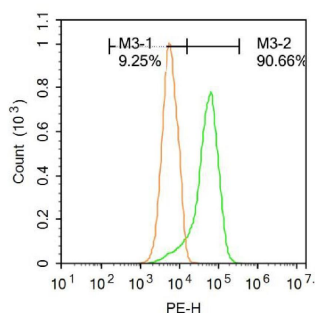
Orders:0086-571-88062880

Technical:0086-571-89986345

Service mail:support@huabio.cn

华安生物
HUABIO
www.huabio.cn

Images

**Fig1:** Blank control: Raji.

Primary Antibody (green line): Rabbit Anti-presenilin 1 antibody (ER1915-40)

Dilution: 1 μ g /10⁶ cells;

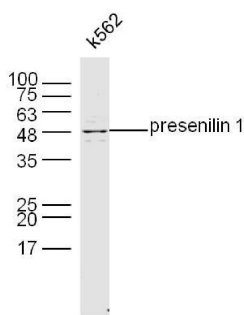
Isotype Control Antibody (orange line): Rabbit IgG .

Secondary Antibody : Goat anti-rabbit IgG-PE

Dilution: 1 μ g /test.

Protocol

The cells were fixed with 4% PFA (10min at room temperature) and then permeabilized with PBST for 20 min at room temperature. The cells were then incubated in 5% BSA to block non-specific protein-protein interactions for 30 min at room temperature. Cells stained with Primary Antibody for 30 min at room temperature. The secondary antibody used for 40 min at room temperature. Acquisition of 20,000 events was performed.

**Fig2:** Sample: K562 Cell Lysate at 40 ug

Primary: Anti- presenilin1 (ER1915-40) at 1/300 dilution

Secondary: Goat Anti-Rabbit IgG at 1/20000 dilution

Predicted band size: 34/52 kD

Observed band size: 48 kD

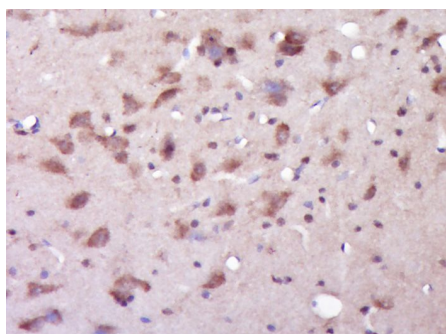
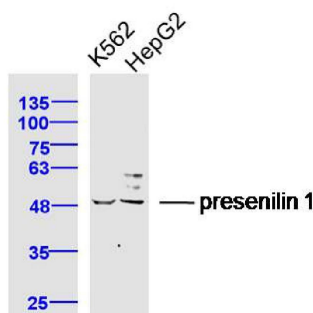


Fig3: Paraformaldehyde-fixed, paraffin embedded (Rat brain); Antigen retrieval by boiling in sodium citrate buffer (pH6.0) for 15min; Block endogenous peroxidase by 3% hydrogen peroxide for 20 minutes; Blocking buffer (normal goat serum) at 37 $^{\circ}$ C for 30min; Antibody incubation with (presenilin 1) Polyclonal Antibody, Unconjugated (ER1915-40) at 1:400 overnight at 4 $^{\circ}$ C, followed by operating according to SP Kit(Rabbit) (sp-0023) instructions and DAB staining.

**Fig4:** Sample:

K562 Cell (Human) Lysate at 40 ug

HepG2 Cell (Human) Lysate at 40 ug

Primary: Anti-presenilin 1 (ER1915-40) at 1/300 dilution

Secondary: Goat Anti-Rabbit IgG at 1/20000 dilution

Predicted band size: 34/52 kD

Observed band size: 50 kD

Hangzhou Huaan Biotechnology Co., Ltd.

Orders:0086-571-88062880

Technical:0086-571-89986345

Service mail:support@huabio.cn

华安生物
HUABIO
www.huabio.cn

Note: All products are "FOR RESEARCH USE ONLY AND ARE NOT INTENDED FOR DIAGNOSTIC OR THERAPEUTIC USE".

Hangzhou Huaan Biotechnology Co., Ltd.

Orders:0086-571-88062880

Technical:0086-571-89986345

Service mail:support@huabio.cn

 华安生物
HUAABIO
www.huabio.cn

Applications:WB=Western blot IHC-P=Immunohistochemistry (paraffin) IF-Cell=Immunofluorescence (Cell) IF-Tissue=Immunofluorescence (Tissue) FC=Flow cytometry IP=Immunoprecipitation