

Anti-NRSF Antibody

ER1914-14



Product Type:	Rabbit polyclonal IgG, primary antibodies
Species reactivity:	Human, Mouse, Rat, Chicken, Pig, Cow, Horse, Rabbit
Applications:	WB, ELISA, IP, IHC-P, IF
Molecular Wt:	121 KDa

Description: Transcriptional repressor which binds neuron-restrictive silencer element (NRSE) and represses neuronal gene transcription in non-neuronal cells. Restricts the expression of neuronal genes by associating with two distinct corepressors, mSin3 and CoREST, which in turn recruit histone deacetylase to the promoters of REST-regulated genes. Mediates repression by recruiting the BHC complex at RE1/NRSE sites which acts by deacetylating and demethylating specific sites on histones, thereby acting as a chromatin modifier. Transcriptional repression by REST-CDYL via the recruitment of histone methyltransferase EHMT2 may be important in transformation suppression.

Immunogen: KLH conjugated synthetic peptide derived from human NRSF 531-450/1097

Positive control: Ubiquitous. Expressed at higher levels in the tissues of the lymphocytic compartment, including spleen, thymus, peripheral blood lymphocytes and ovary.

Subcellular location: Nucleus.

Database links: SwissProt: Q13127 Human

Recommended Dilutions:

WB	1:500-2000
ELISA	1:5000-10000
IP	1:20-100
IHC-P	1:100-500
IF	1:100-500

Storage Buffer: 0.01M TBS(pH7.4) with 1% BSA, 0.03% Proclin300 and 50% Glycerol.

Storage Instruction: Store at -20℃ for one year. Avoid repeated freeze/thaw cycles. The lyophilized antibody is stable at room temperature for at least one month and for greater than a year when kept at -20℃. When reconstituted in sterile pH 7.4 0.01M PBS or diluent of antibody the antibody is stable for at least two weeks at 2-4℃.

Purity: Protein A affinity purified.

Hangzhou Huaan Biotechnology Co., Ltd.

Orders:0086-571-88062880

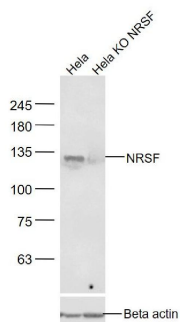
Technical:0086-571-89986345

Service mail:support@huabio.cn

华安生物
HUABIO
www.huabio.cn

Applications:WB=Western blot IHC-P=Immunohistochemistry (paraffin) IF-Cell=Immunofluorescence (Cell) IF-Tissue=Immunofluorescence (Tissue) FC=Flow cytometry IP=Immunoprecipitation

Images

**Fig1: Sample:**

HeLa(Human) Cell Lysate at 30 ug

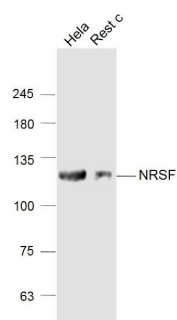
HeLa KO NRSF (Human) Cell Lysate at 30 ug

Primary: Anti- NRSF (ER1914-14) at 1/1000 dilution

Secondary: IRDye800CW Goat Anti-Rabbit IgG at 1/20000 dilution

Predicted band size: 121 kD

Observed band size: 121 kD

**Fig2: Sample:**

HeLa(Human) Cell Lysate at 30 ug

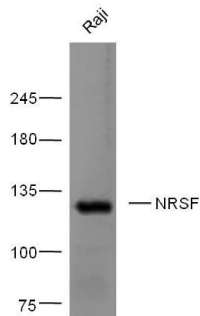
Rest c(Human) Cell Lysate at 30 ug

Primary: Anti-NRSF (ER1914-14) at 1/1000 dilution

Secondary: IRDye800CW Goat Anti-Rabbit IgG at 1/20000 dilution

Predicted band size: 121 kD

Observed band size: 121 kD

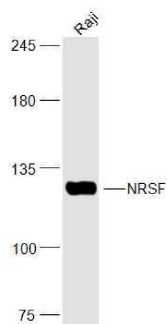
**Fig3: Sample:** Raji Cell Lysate at 40 ug

Primary: Anti- NRSF (ER1914-14) at 1/300 dilution

Secondary: IRDye800CW Goat Anti-Rabbit IgG at 1/20000 dilution

Predicted band size: 121 kD

Observed band size: 121 kD

**Fig4: Sample:**

Raji(Human) Cell Lysate at 30 ug

Primary: Anti-NRSF (ER1914-14) at 1/300 dilution

Secondary: IRDye800CW Goat Anti-Rabbit IgG at 1/20000 dilution

Predicted band size: 121 kD

Observed band size: 121 kD

Hangzhou Huaan Biotechnology Co., Ltd.

Orders: 0086-571-88062880

Technical: 0086-571-89986345

Service mail: support@huabio.cn

华安生物
HUABIO
www.huabio.cn

Note: All products are "FOR RESEARCH USE ONLY AND ARE NOT INTENDED FOR DIAGNOSTIC OR THERAPEUTIC USE".

Hangzhou Huaan Biotechnology Co., Ltd.

Orders: 0086-571-88062880

Technical: 0086-571-89986345

Service mail: support@huabio.cn

 华安生物
HUAABIO
www.huabio.cn

Applications: WB=Western blot IHC-P=Immunohistochemistry (paraffin) IF-Cell=Immunofluorescence (Cell) IF-Tissue=Immunofluorescence (Tissue) FC=Flow cytometry IP=Immunoprecipitation