

Anti-KMT4 Antibody

ER1912-09



Product Type:	Rabbit polyclonal IgG, primary antibodies
Species reactivity:	Human, Mouse, Rat, Cow, Sheep, African green monkey
Applications:	WB, ELISA, IHC-P, IF, ICC
Molecular Wt:	185 KDa

Description: The KMT4 / Dot1 (disruptor of telomeric silencing) family are a class of histone methyltransferases that play an indirect role in chromatin silencing by targeting a conserved lysine residue in the nucleosome core. Biochemical studies suggest that recombinant Dot1 proteins are active on recombinant nucleosomes, free of any modifications.

Immunogen: KLH conjugated synthetic peptide derived from human KMT4 51-150/1739

Subcellular location: Nuclear

Database links: SwissProt: Q8TEK3 Human

Recommended Dilutions:

WB	1:500-2000
ELISA	1:5000-10000
IHC-P	1:100-500
IF	1:100-500
ICC	1:100-500

Storage Buffer: 0.01M TBS(pH7.4) with 1% BSA, 0.03% Proclin300 and 50% Glycerol.

Storage Instruction: Store at -20°C for one year. Avoid repeated freeze/thaw cycles. The lyophilized antibody is stable at room temperature for at least one month and for greater than a year when kept at -20°C. When reconstituted in sterile pH 7.4 0.01M PBS or diluent of antibody the antibody is stable for at least two weeks at 2-4°C.

Purity: Protein A affinity purified.

Hangzhou Huaan Biotechnology Co., Ltd.

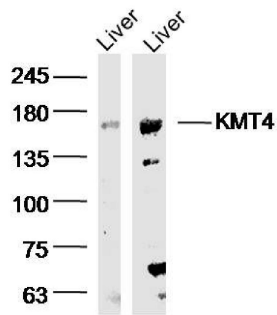
Orders:0086-571-88062880

Technical:0086-571-89986345

Service mail:support@huabio.cn

 华安生物
HUABIO
www.huabio.cn

Images

**Fig1: Sample:**

Liver (Mouse) Lysate at 40 ug

Liver (Rat) Lysate at 40 ug

Primary: Anti- KMT4 (ER1912-09) at 1/300 dilution

Secondary: Goat Anti-Rabbit IgG at 1/20000 dilution

Predicted band size: 185 kD

Observed band size: 170 kD

Note: All products are "FOR RESEARCH USE ONLY AND ARE NOT INTENDED FOR DIAGNOSTIC OR THERAPEUTIC USE".

Hangzhou Huaan Biotechnology Co., Ltd.

Orders:0086-571-88062880

Technical:0086-571-89986345

Service mail:support@huabio.cn

华安生物
HUABIO
www.huabio.cn