

Anti-Insulin Antibody

ER1911-49



Product Type:	Rabbit polyclonal IgG, primary antibodies
Species reactivity:	Human, Mouse, Rat, Pig
Applications:	WB, ELISA, IP
Molecular Wt:	5.77754 KDa

Description: Insulin decreases blood glucose concentration. It increases cell permeability to monosaccharides, amino acids and fatty acids. It accelerates glycolysis, the pentose phosphate cycle, and glycogen synthesis in liver.

Immunogen: porcine pancreas , full length

Subcellular location: Secreted.

Database links: SwissProt: P01315 Human

Recommended Dilutions:

WB	1:500-2000
ELISA	1:5000-10000
IP	1:20-100

Storage Buffer: 0.01M TBS(pH7.4) with 1% BSA, 0.03% Proclin300 and 50% Glycerol.

Storage Instruction: Store at -20°C for one year. Avoid repeated freeze/thaw cycles. The lyophilized antibody is stable at room temperature for at least one month and for greater than a year when kept at -20°C. When reconstituted in sterile pH 7.4 0.01M PBS or diluent of antibody the antibody is stable for at least two weeks at 2-4°C.

Purity: Protein A affinity purified.

Hangzhou Huaan Biotechnology Co., Ltd.

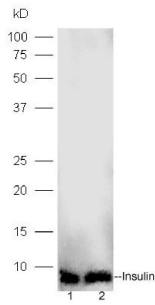
Orders:0086-571-88062880

Technical:0086-571-89986345

Service mail:support@huabio.cn

 华安生物
HUABIO
www.huabio.cn

Images

**Fig1: Sample:**

Lane 1: Islet A lysates at 20ug;

lane2, Islet B lysates at 20ug;

Primary: Anti-Insulin (ER1911-49) at 1:300 dilution;

Secondary: HRP conjugated Goat-Anti-rabbit IgG(bs-0295G-HRP)

at 1: 5000 dilution;

Predicted band size:5.8 kD Observed band size:5.8 kD

Note: All products are "FOR RESEARCH USE ONLY AND ARE NOT INTENDED FOR DIAGNOSTIC OR THERAPEUTIC USE".

Hangzhou Huaan Biotechnology Co., Ltd.

Orders:0086-571-88062880

Technical:0086-571-89986345

Service mail:support@huabio.cn

 华安生物
HUABIO
www.huabio.cn