

Anti-ILDR1 Antibody

ER1911-42



Product Type:	Rabbit polyclonal IgG, primary antibodies
Species reactivity:	Human, Mouse, Rat, Pig, Cow, Horse, Rabbit, Sheep
Applications:	WB, ELISA, FC
Molecular Wt:	60 KDa
Description:	Putative membrane receptor.
Immunogen:	KLH conjugated synthetic peptide derived from human ILDR1 101-200/546
Positive control:	Mainly expressed in prostate and to a lower extent in testis, pancreas, kidney, heart and liver.
Subcellular location:	Cell membrane; Single pass type I membrane protein. Isoform 5: Cytoplasm (cytosol).
Database links:	SwissProt: Q86SU0 Human
Recommended Dilutions:	
WB	1:500-2000
ELISA	1:5000-10000
FC	3ug/Test
Storage Buffer:	0.01M TBS(pH7.4) with 1% BSA, 0.03% Proclin300 and 50% Glycerol.
Storage Instruction:	Store at -20°C for one year. Avoid repeated freeze/thaw cycles. The lyophilized antibody is stable at room temperature for at least one month and for greater than a year when kept at -20°C. When reconstituted in sterile pH 7.4 0.01M PBS or diluent of antibody the antibody is stable for at least two weeks at 2-4°C.
Purity:	Protein A affinity purified.

Hangzhou Huaan Biotechnology Co., Ltd.

Orders:0086-571-88062880

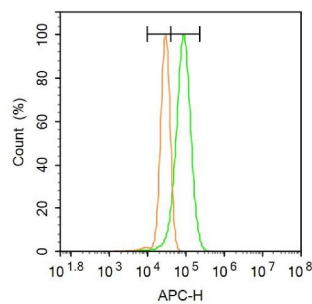
Technical:0086-571-89986345

Service mail:support@huabio.cn

 华安生物
HUABIO
www.huabio.cn

Applications:WB=Western blot IHC-P=Immunohistochemistry (paraffin) IF-Cell=Immunofluorescence (Cell) IF-Tissue=Immunofluorescence (Tissue) FC=Flow cytometry IP=Immunoprecipitation

Images

**Fig1:** Blank control: A431.

Primary Antibody (green line): Rabbit Anti-ILDR1 antibody (ER1911-42)

Dilution: 1 μ g /10⁶ cells;

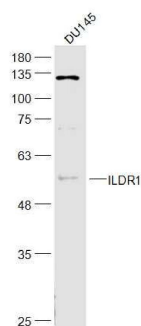
Isotype Control Antibody (orange line): Rabbit IgG .

Secondary Antibody: Goat anti-rabbit IgG-AF647

Dilution: 1 μ g /test.

Protocol

The cells were fixed with 4% PFA (10min at room temperature) and then permeabilized with 20% PBST for 20 min at room temperature. The cells were then incubated in 5% BSA to block non-specific protein-protein interactions for 30 min at -20 $^{\circ}$ C. Cells stained with Primary Antibody for 30 min at room temperature. The secondary antibody used for 40 min at room temperature. Acquisition of 20,000 events was performed.

**Fig2:** Sample:

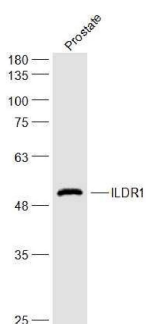
DU145(Human) Cell Lysate at 30 ug

Primary: Anti-ILDR1 (ER1911-42) at 1/300 dilution

Secondary: Goat Anti-Rabbit IgG at 1/20000 dilution

Predicted band size: 60 kD

Observed band size: 56 kD

**Fig3:** Sample:

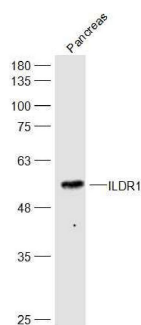
Prostate(Rat) Cell Lysate at 40 ug

Primary: Anti-ILDR1 (ER1911-42) at 1/300 dilution

Secondary: Goat Anti-Rabbit IgG at 1/20000 dilution

Predicted band size: 60 kD

Observed band size: 56 kD

**Fig4:** Sample:

Pancreas(Mouse) Cell Lysate at 40 ug

Primary: Anti-ILDR1 (ER1911-42) at 1/300 dilution

Secondary: Goat Anti-Rabbit IgG at 1/20000 dilution

Predicted band size: 60 kD

Observed band size: 56kD

Hangzhou Huan Biotechnology Co., Ltd.

Orders:0086-571-88062880

Technical:0086-571-89986345

Service mail:support@huabio.cn

华安生物
HUABIO
www.huabio.cn

Note: All products are "FOR RESEARCH USE ONLY AND ARE NOT INTENDED FOR DIAGNOSTIC OR THERAPEUTIC USE".

Hangzhou Huaan Biotechnology Co., Ltd.

Orders:0086-571-88062880

Technical:0086-571-89986345

Service mail:support@huabio.cn

