

Anti-FBXO25 Antibody

ER1908-73



Product Type:	Rabbit polyclonal IgG, primary antibodies
Species reactivity:	Human, Mouse, Rat, Pig, Rabbit
Applications:	WB, ELISA
Molecular Wt:	43 KDa

Description: Substrate-recognition component of the SCF(SKP1-CUL1-F-box protein)-type E3 ubiquitin ligase complex. May play a role in accumulation of expanded polyglutamine (polyQ) protein huntingtin (HTT) (By similarity).

Immunogen: KLH conjugated synthetic peptide derived from human FBXO25 55-150/367

Positive control: Expressed in all brain tissue observed.

Subcellular location: Nuclear. Note=In the nucleus, associates with a subnuclear dot-like structure. Colocalized with SKP1

Database links: SwissProt: Q8TCJ0 Human

Recommended Dilutions:

WB	1:500-2000
ELISA	1:5000-10000

Storage Buffer: 0.01M TBS(pH7.4) with 1% BSA, 0.03% Proclin300 and 50% Glycerol.

Storage Instruction: Store at -20°C for one year. Avoid repeated freeze/thaw cycles. The lyophilized antibody is stable at room temperature for at least one month and for greater than a year when kept at -20°C. When reconstituted in sterile pH 7.4 0.01M PBS or diluent of antibody the antibody is stable for at least two weeks at 2-4°C.

Purity: Protein A affinity purified.

Hangzhou Huaan Biotechnology Co., Ltd.

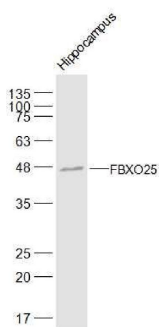
Orders:0086-571-88062880

Technical:0086-571-89986345

Service mail:support@huabio.cn

 华安生物
HUABIO
www.huabio.cn

Images

**Fig1: Sample:**

Hippocampus (Mouse) Lysate at 40 ug

Primary: Anti-FBXO25 (ER1908-73) at 1/500 dilution

Secondary: Goat Anti-Rabbit IgG at 1/20000 dilution

Predicted band size: 43 kD

Observed band size: 43 kD

Note: All products are "FOR RESEARCH USE ONLY AND ARE NOT INTENDED FOR DIAGNOSTIC OR THERAPEUTIC USE".

Hangzhou Huaan Biotechnology Co., Ltd.

Orders:0086-571-88062880

Technical:0086-571-89986345

Service mail:support@huabio.cn

华安生物
HUABIO
www.huabio.cn