

Anti-C6orf50 Antibody

ER1905-09



Product Type: Rabbit polyclonal IgG, primary antibodies

Species reactivity: Human

Applications: WB, ELISA, IHC-P, IF, ICC

Molecular Wt: 12 KDa

Immunogen: KLH conjugated synthetic peptide derived from human C6orf50 1-80/102

Subcellular location: Membrane; Single-pass membrane protein (Potential).

Database links: SwissProt: Q9HD87 Human

Recommended Dilutions:

WB	1:500-2000
ELISA	1:5000-10000
IHC-P	1:100-500
IF	1:100-500
ICC	1:100-500

Storage Buffer: 0.01M TBS(pH7.4) with 1% BSA, 0.03% Proclin300 and 50% Glycerol.

Storage Instruction: Store at -20°C for one year. Avoid repeated freeze/thaw cycles. The lyophilized antibody is stable at room temperature for at least one month and for greater than a year when kept at -20°C. When reconstituted in sterile pH 7.4 0.01M PBS or diluent of antibody the antibody is stable for at least two weeks at 2-4°C.

Purity: Protein A affinity purified.

Hangzhou Huaan Biotechnology Co., Ltd.

Orders:0086-571-88062880

Technical:0086-571-89986345

Service mail:support@huabio.cn

 华安生物
HUABIO
www.huabio.cn

Images

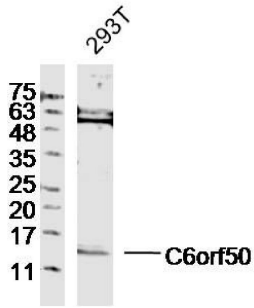


Fig1: Sample:293T(Human)Cell Lysate at 40 ug
Primary: Anti-C6orf50(ER1905-09)at 1/300 dilution
Secondary: Goat Anti-Rabbit IgG at 1/20000 dilution
Predicted band size: 12 kD
Observed band size: 12 kD

Note: All products are "FOR RESEARCH USE ONLY AND ARE NOT INTENDED FOR DIAGNOSTIC OR THERAPEUTIC USE".

Hangzhou Huaan Biotechnology Co., Ltd.

Orders:0086-571-88062880

Technical:0086-571-89986345

Service mail:support@huabio.cn

华安生物
HUABIO
www.huabio.cn