

Anti-MARCH9 Antibody

ER1903-04



Product Type:	Rabbit polyclonal IgG, primary antibodies
Species reactivity:	Human, Mouse, Rat, Chicken, Dog, Pig, Cow, Horse, Rabbit, Sheep
Applications:	WB, ELISA, FC, IF
Molecular Wt:	38 KDa
Description:	E3 ubiquitin-protein ligase that may mediate ubiquitination of MHC-I, CD4 and ICAM1, and promote their subsequent endocytosis and sorting to lysosomes via multivesicular bodies. E3 ubiquitin ligases accept ubiquitin from an E2 ubiquitin-conjugating enzyme in the form of a thioester and then directly transfer the ubiquitin to targeted substrates.
Immunogen:	KLH conjugated synthetic peptide derived from human MARCH9 201-300/346
Positive control:	Ubiquitously expressed.
Subcellular location:	Golgi apparatus membrane; Multi-pass membrane protein. Lysosome membrane; Multi-pass membrane protein.
Database links:	SwissProt: Q86YJ5 Human
Recommended Dilutions:	
WB	1:500-2000
ELISA	1:5000-10000
FC	1µg/Test
IF	1:50-200
Storage Buffer:	0.01M TBS(pH7.4) with 1% BSA, 0.03% Proclin300 and 50% Glycerol.
Storage Instruction:	Store at -20℃ for one year. Avoid repeated freeze/thaw cycles. The lyophilized antibody is stable at room temperature for at least one month and for greater than a year when kept at -20℃. When reconstituted in sterile pH 7.4 0.01M PBS or diluent of antibody the antibody is stable for at least two weeks at 2-4℃.
Purity:	Protein A affinity purified.

Hangzhou Huaan Biotechnology Co., Ltd.

Orders:0086-571-88062880

Technical:0086-571-89986345

Service mail:support@huabio.cn

华安生物
HUABIO
www.huabio.cn

Applications:WB=Western blot IHC-P=Immunohistochemistry (paraffin) IF-Cell=Immunofluorescence (Cell) IF-Tissue=Immunofluorescence (Tissue) FC=Flow cytometry IP=Immunoprecipitation

Images

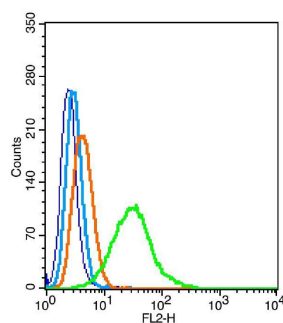


Fig1: Blank control: Hela(blue), the cells were fixed with 2% paraformaldehyde (10 min)
Isotype Control Antibody: Rabbit IgG(orange) ; Secondary Antibody: Goat anti-rabbit IgG-FITC(white blue), Dilution: 1:200 in 1 X PBS containing 0.5% BSA ; Primary Antibody Dilution: 1 μ g in 100 μ L 1X PBS containing 0.5% BSA(green).

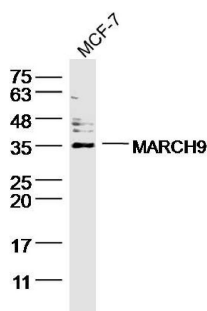


Fig2: Sample: MCF-7 (human)cell Lysate at 40 ug
Primary: Anti- MARCH9(ER1903-04)at 1/300 dilution
Secondary: Goat Anti-Rabbit IgG at 1/20000 dilution
Predicted band size: 38kD
Observed band size: 38 kD

Note: All products are "FOR RESEARCH USE ONLY AND ARE NOT INTENDED FOR DIAGNOSTIC OR THERAPEUTIC USE".

Hangzhou Huaan Biotechnology Co., Ltd.

Orders:0086-571-88062880

Technical:0086-571-89986345

Service mail:support@huabio.cn

华安生物
HUABIO
www.huabio.cn

Applications:WB=Western blot IHC-P=Immunohistochemistry (paraffin) IF-Cell=Immunofluorescence (Cell) IF-Tissue=Immunofluorescence (Tissue) FC=Flow cytometry IP=Immunoprecipitation