

# Anti-LAMP2a Antibody

## ER1802-99



<b>Product Type:</b>	Rabbit polyclonal IgG, primary antibodies
<b>Species reactivity:</b>	Human, Mouse
<b>Applications:</b>	WB, IHC-P
<b>Molecular Wt:</b>	Predicted band size: 45 kDa

**Description:** Lysosome-associated membrane proteins (LAMP) are glycosylated type I membrane proteins that play a role in the biogenesis of the pigment melanin. LAMP-1 (also designated CD107A) and LAMP-2 (also designated CD107B) are involved in a variety of functions, including cellular adhesion, and are thought to participate in the process of tumor invasion and metastasis. Newly synthesized LAMP-1 and LAMP-2 proteins are sorted at the trans Golgi network and are transported intracellularly via a pathway that is distinct from the clathrin-coated vesicles used for the mannose-6 phosphate receptor. LAMP-1 is expressed on the surface of thrombin-activated but not resting platelets, and it is thought to be involved in the adhesive, prothrombic properties of these cells. Both LAMP-1 and LAMP-2 are involved in maintaining lysosome acidity and protecting the lysosomal membranes from autodigestion, and their expression is increased in patients with lysosomal storage disorders.

**Immunogen:** Synthetic peptide within C-terminal human LAMP2a.

**Positive control:** Mouse placenta tissue, human prostate tissue, human kidney tissue, human placenta tissue.

**Subcellular location:** Plasma membrane. Endosome. Lysosome.

**Database links:** SwissProt: P13473 Human

**Recommended Dilutions:**

<b>WB</b>	1:500
<b>IHC-P</b>	1:50-1:200

**Storage Buffer:** 1\*PBS (pH7.4), 0.2% BSA, 50% Glycerol. Preservative: 0.05% Sodium Azide.

**Storage Instruction:** Store at +4°C after thawing. Aliquot store at -20°C. Avoid repeated freeze / thaw cycles.

**Purity:** Immunogen affinity purified.

Hangzhou Huaan Biotechnology Co., Ltd.

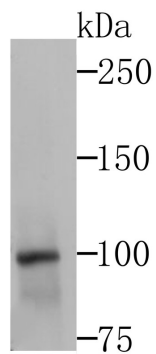
Orders:0086-571-88062880

Technical:0086-571-89986345

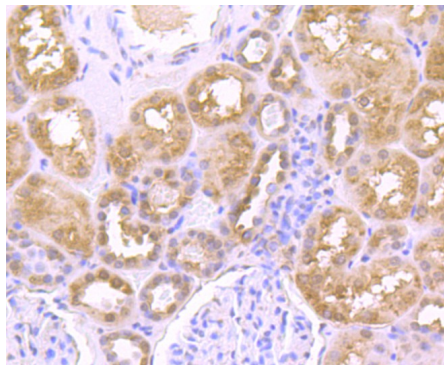
Service mail:support@huabio.cn

 华安生物  
HUABIO  
www.huabio.cn

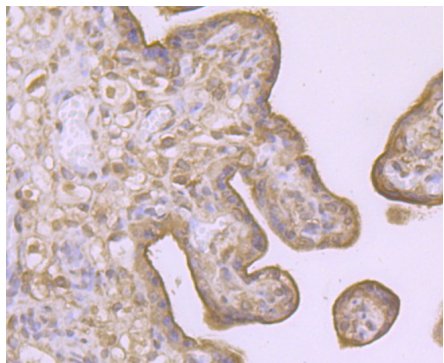
## Images



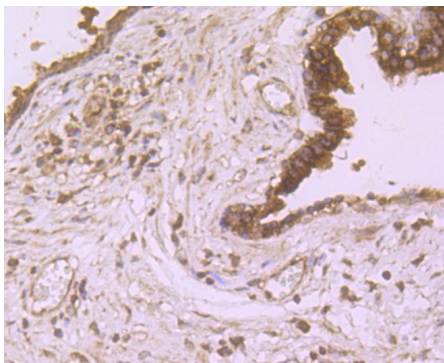
**Fig1:** Western blot analysis of LAMP2a on mouse placenta tissue lysates using anti-LAMP2a antibody at 1/1,000 dilution.



**Fig2:** Immunohistochemical analysis of paraffin-embedded human kidney tissue using anti-LAMP2a antibody. Counter stained with hematoxylin.



**Fig3:** Immunohistochemical analysis of paraffin-embedded human placenta tissue using anti-LAMP2a antibody. Counter stained with hematoxylin.



**Fig4:** Immunohistochemical analysis of paraffin-embedded human prostate tissue using anti-LAMP2a antibody. Counter stained with hematoxylin.

Hangzhou Huaan Biotechnology Co., Ltd.

Orders:0086-571-88062880

Technical:0086-571-89986345

Service mail:support@huabio.cn

华安生物  
HUABIO  
www.huabio.cn

---

**Note:** All products are "FOR RESEARCH USE ONLY AND ARE NOT INTENDED FOR DIAGNOSTIC OR THERAPEUTIC USE".

---

**Hangzhou Huaan Biotechnology Co., Ltd.**

Orders:0086-571-88062880

Technical:0086-571-89986345

Service mail:support@huabio.cn

