

Anti-EpCAM Antibody [7E11]

EM1712-43



Product Type:	Mouse monoclonal IgG1, primary antibodies
Species reactivity:	Human
Applications:	WB, IHC-P, ELISA
Molecular Wt:	35 kDa
Clone number:	7E11

Description: This gene encodes a carcinoma-associated antigen and is a member of a family that includes at least two type I membrane proteins. This antigen is expressed on most normal epithelial cells and gastrointestinal carcinomas and functions as a homotypic calcium-independent cell adhesion molecule. The antigen is being used as a target for immunotherapy treatment of human carcinomas. Mutations in this gene result in congenital tufting enteropathy. Tissue specificity: This protein is expressed in almost all epithelial cell membranes but not on mesodermal or neural cell membranes. Found on the surface of adenocarcinomas. ABCAM: Epithelial Cell Adhesion Molecule (EpCAM) is a 40 kDa cell surface antigen. This antigen has been identified independently by a number of groups, and has been known by a variety of names. Several monoclonal antibodies have been raised against EpCAM, many of which have been described as tumour specific molecules on carcinomas. EpCAM is a Type 1 transmembrane glycoprotein. It is expressed on the basolateral membrane of cells by the majority of epithelial tissues, with the exception of adult squamous epithelium and some specific epithelial cell types including hepatocytes and gastric epithelial cells. EpCAM expression has been reported to be a possible marker of early malignancy, with expression being increased in tumour cells, and de novo expression being seen in dysplastic squamous epithelium. BIOLEGEND: This cell surface, glycosylated 40kD protein is highly expressed in the bone marrow, colon, lung, and most normal epithelial cells and is expressed on carcinomas of gastrointestinal origin.

Immunogen:	Purified recombinant fragment of human EPCAM expressed in E. Coli.
Positive control:	HTC116, T47D, human lung cancer, colon cancer, breast cancer, rectal cancer.
Subcellular location:	Cell junction, Cell membrane, Membrane, Tight junction.
Database links:	SwissProt: P16422 Human
Recommended Dilutions:	
WB	1:500-1:2,000
IHC-P	1:200-1:1,000
ELISA	1:10,000
Storage Buffer:	Purified antibody in PBS with 0.05% sodium azide.
Storage Instruction:	4°C; -20°C for long term storage.
Purity:	Protein A affinity purified.

Hangzhou Huaan Biotechnology Co., Ltd.

Orders: 0086-571-88062880

Technical: 0086-571-89986345

Service mail: support@huabio.cn

华安生物
HUABIO
www.huabio.cn

Images

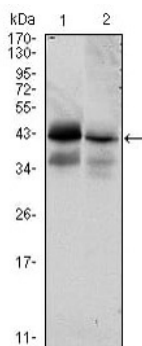


Fig1: Western blot analysis using EPCAM mouse mAb against HTC116 (1) and T47D (2) cell lysate.

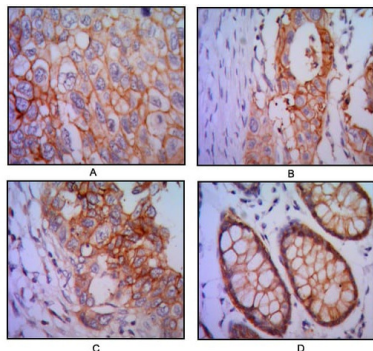


Fig2: Immunohistochemical analysis of paraffin-embedded human lung cancer (A), colon cancer (B), breast cancer (C) and rectal cancer(D), using EPCAM mouse mAb with DAB staining.

Note: All products are "FOR RESEARCH USE ONLY AND ARE NOT INTENDED FOR DIAGNOSTIC OR THERAPEUTIC USE".

Background References

1. Muenz M. et. al. The carcinoma-associated antigen EpCAM upregulates c-myc and induces cell proliferation. *Oncogene* 23:5748-5758(2004).

Hangzhou Huaan Biotechnology Co., Ltd.

Orders:0086-571-88062880

Technical:0086-571-89986345

Service mail:support@huabio.cn

华安生物
HUABIO
www.huabio.cn