

# Anti-TGF beta 1 Antibody [B2-F6]

## EM1709-93



<b>Product Type:</b>	Mouse monoclonal IgG1, primary antibodies
<b>Species reactivity:</b>	Human
<b>Applications:</b>	WB, IHC-P, FC
<b>Molecular Wt:</b>	44 kDa
<b>Clone number:</b>	B2-F6

**Description:** The transforming growth factors b (TGF $\beta$ ) superfamily is composed of numerous growth and differentiation factors, including TGF $\beta$ 1-3. TGF $\beta$ s are secreted from cells as latent complexes consisting of mature dimeric growth factor, the latency-associated propeptide (LAP) and a distinct gene product, latent TGF $\beta$  binding protein LTBP. Members of the TGF superfamily are involved in embryonic development and adult tissue homeostasis. The precursor of TGF $\beta$  is cleaved into mature TGF $\beta$  and LAP (latency associated peptide). Mature TGF $\beta$  remains associated with LAP by non-covalent interactions that block TGF $\beta$  from binding to its receptor.

**Immunogen:** Recombinant protein within human TGF beta 1 aa 62-195.

**Positive control:** Human TGF beta 1 recombinant protein, human lung tissue, human lymphoid tissue, A549.

**Subcellular location:** Secreted. Extracellular matrix.

**Database links:** SwissProt: P01137 Human

### Recommended Dilutions:

<b>WB</b>	1:500-1:1,000
<b>IHC-P</b>	1:100-1:500
<b>FC</b>	1:100-1:200

**Storage Buffer:** Purified antibody in PBS with 0.05% sodium azide.

**Storage Instruction:** 4°C; -20°C for long term storage.

**Purity:** Protein A affinity purified.

Hangzhou Huaan Biotechnology Co., Ltd.

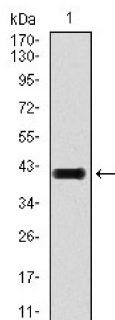
Orders:0086-571-88062880

Technical:0086-571-89986345

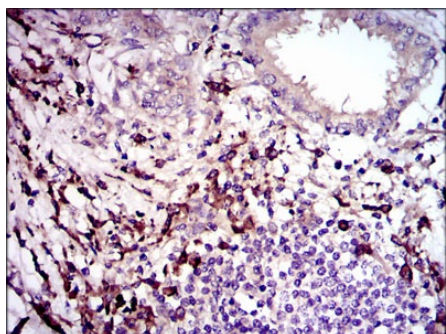
Service mail:support@huabio.cn

华安生物  
HUABIO  
www.huabio.cn

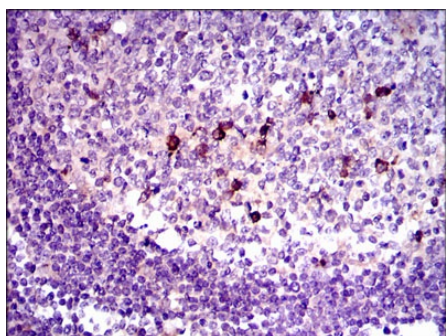
## Images



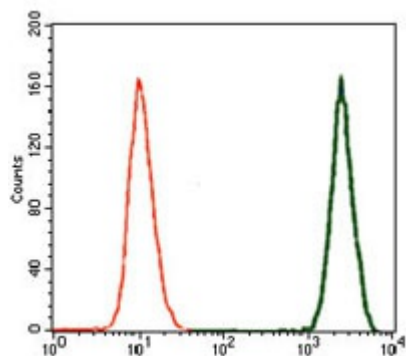
**Fig1:** Western blot analysis of TGF beta 1 on human TGF beta 1 recombinant protein using anti- TGF beta 1 antibody at 1/1,000 dilution.



**Fig2:** Immunohistochemical analysis of paraffin-embedded human lung tissue using anti- TGF beta 1 antibody. Counter stained with hematoxylin.



**Fig3:** Immunohistochemical analysis of paraffin-embedded human lymphoid tissue using anti- TGF beta 1 antibody. Counter stained with hematoxylin.



**Fig4:** Flow cytometric analysis of A549 cells with TGF beta 1 antibody at 1/100 dilution (green) compared with an unlabelled control (cells without incubation with primary antibody; red).

Hangzhou Huaan Biotechnology Co., Ltd.

Orders:0086-571-88062880

Technical:0086-571-89986345

Service mail:support@huabio.cn

华安生物  
HUABIO  
www.huabio.cn

---

**Note:** All products are "FOR RESEARCH USE ONLY AND ARE NOT INTENDED FOR DIAGNOSTIC OR THERAPEUTIC USE".

---

**Hangzhou Huaan Biotechnology Co., Ltd.**

Orders:0086-571-88062880

Technical:0086-571-89986345

Service mail:support@huabio.cn

 华安生物  
HUAABIO  
www.huabio.cn

Applications:WB=Western blot IHC-P=Immunohistochemistry (paraffin) IF-Cell=Immunofluorescence (Cell) IF-Tissue=Immunofluorescence (Tissue) FC=Flow cytometry IP=Immunoprecipitation