

HRP Conjugated Anti-beta Tubulin Antibody [1-B11]

EM1701-59



Product Type:	Mouse monoclonal IgG1, primary antibodies
Species reactivity:	Human, Mouse, Rat, Zebrafish
Applications:	WB, IHC-P
Molecular Wt:	50 kDa
Clone number:	1-B11

Description: Tubulin is one of several members of a small family of globular proteins. The most common members of the tubulin family are α -tubulin and β -tubulin. The beta-tubulin (relative molecular weight about 50 kDa) is counterpart of alpha-tubulin in tubulin heterodimer, it is coded by multiple tubulin genes and it is also posttranslationally modified. Heterogeneity of subunit is concentrated in C-terminal structural domain. Beta-Tubulin may have bound GTP or GDP. Under certain conditions β -tubulin can hydrolyze its bound GTP to GDP plus Pi, release the Pi, and exchange the GDP for GTP.

Conjugate: HRP-conjugated

Immunogen: Synthetic peptide within Human Beta tubulin aa 46-95 / 444.

Positive control: NIH-3T3 cell lysate, PC-12 cell lysate, 293 cell lysate, HeLa cell lysate, mouse fallopian tube tissue.

Subcellular location: Cytoplasm, Cytoskeleton.

Database links: SwissProt: P07437 Human | P99024 Mouse | P69897 Rat

Recommended Dilutions:

WB	1:1,000-1:5,000
IHC-P	1:50-1:200

Storage Buffer: 1*PBS (pH7.4), 0.2% BSA, 50% Glycerol.

Storage Instruction: Store at +4°C after thawing. Aliquot store at -20°C or -80°C. Avoid repeated freeze / thaw cycles.

Purity: Protein A affinity purified.

Hangzhou Huaan Biotechnology Co., Ltd.

Orders:0086-571-88062880

Technical:0086-571-89986345

Service mail:support@huabio.cn

 华安生物
HUABIO
www.huabio.cn

Images

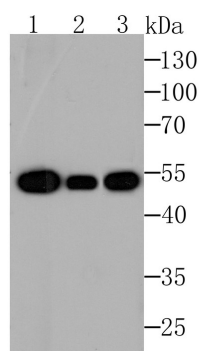


Fig1: Western blot analysis of beta Tubulin-HRP on different lysates using anti-beta Tubulin-HRP antibody at 1/1,000 dilution.

Positive control:

Lane 1: HeLa cell lysate
Lane 2: NIH-3T3 cell lysate
Lane 3: PC-12 cell lysate

Fig2: Western blot analysis of beta Tubulin on different lysates with Mouse anti-beta Tubulin antibody (EM1701-59) at 1/5,000 dilution.

Lane 1: 293 cell lysate
Lane 2: HeLa cell lysate

Lysates/proteins at 10 µg/Lane.

Predicted band size: 50 kDa
Observed band size: 55 kDa

Exposure time: 0.5 minutes ;

10% SDS-PAGE gel.

Proteins were transferred to a PVDF membrane and blocked with 5% NFDm/TBST for 1 hour at room temperature. The primary antibody (EM1701-59) at 1/5,000 dilution was used in 5% NFDm/TBST at room temperature for 2 hours. Goat Anti-Mouse IgG - HRP Secondary Antibody (HA1006) at 1:100,000 dilution was used for 1 hour at room temperature.

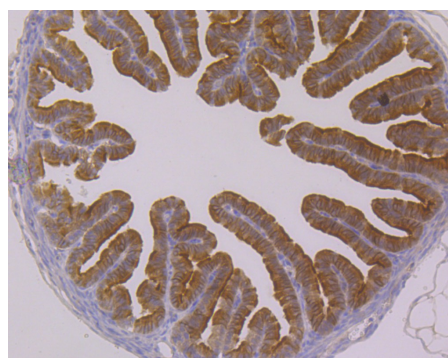
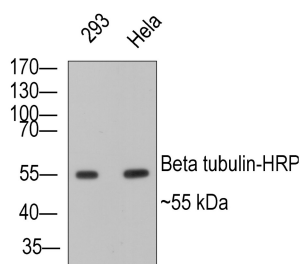


Fig3: Immunohistochemical analysis of paraffin-embedded mouse fallopian tube tissue using anti-beta Tubulin-HRP in antibody. Counter stained with hematoxylin.

Note: All products are "FOR RESEARCH USE ONLY AND ARE NOT INTENDED FOR DIAGNOSTIC OR THERAPEUTIC USE".

Hangzhou Huaan Biotechnology Co., Ltd.

Orders: 0086-571-88062880

Technical: 0086-571-89986345

Service mail: support@huabio.cn

华安生物
HUABIO
www.huabio.cn

Applications: WB=Western blot IHC-P=Immunohistochemistry (paraffin) IF-Cell=Immunofluorescence (Cell) IF-Tissue=Immunofluorescence (Tissue) FC=Flow cytometry IP=Immunoprecipitation

© 2014-2015 (2015).

2. Crabtree D.V. et al. Tubulins in the primate retina: evidence that xanthophylls may be endogenous ligands for the paclitaxel-binding site. *Med. Chem.* 9:1967-1976(2000).