

Anti-GAPDH Antibody [5-E10]

EM1101



Product Type:	Mouse monoclonal IgM, primary antibodies
Species reactivity:	Human, Mouse, Rat, Zebrafish, Rabbit
Applications:	WB, IF-Cell
Molecular Wt:	Predicted band size: 36 kDa
Clone number:	5-E10

Description: GAPDH (Glyceraldehyde-3-phosphate dehydrogenase) has both glyceraldehyde-3-phosphate dehydrogenase and nitrosylase activities, thereby playing a role in glycolysis and nuclear functions, respectively. It participates in nuclear events including transcription, RNA transport, DNA replication and apoptosis. GAPDH is a key enzyme in glycolysis that catalyzes the first step of the pathway by converting D-glyceraldehyde 3-phosphate (G3P) into 3-phospho-D-glyceroyl phosphate.

Immunogen: Synthetic peptide within human GAPDH aa 10-50.

Positive control: MDA-MB-231 cell lysate, HeLa cell lysate, MCF7 cell lysate, SK-Br-3 cell lysate, JAR cell lysate, NIH/3T3 cell lysate, C2C12 cell lysate, PC-12 cell lysate, mouse kidney tissue lysate, rat liver tissue lysate, F9, HeLa, HepG2.

Subcellular location: Cytoplasm

Database links: SwissProt: P04406 Human | P16858 Mouse | P04797 Rat

Recommended Dilutions:

WB	1:5,000-1:10,000
IF-Cell	1:200-1:500

Storage Buffer: 1*PBS (pH7.4), 0.2% BSA, 40% Glycerol. Preservative: 0.05% Sodium Azide.

Storage Instruction: Store at +4°C after thawing. Aliquot store at -20°C or -80°C. Avoid repeated freeze / thaw cycles.

Purity: Protein L affinity purified.

Hangzhou Huaan Biotechnology Co., Ltd.

Orders:0086-571-88062880

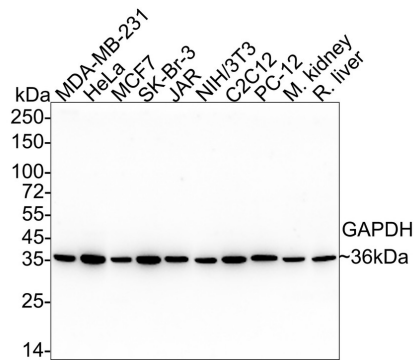
Technical:0086-571-89986345

Service mail:support@huabio.cn

 华安生物
HUABIO
www.huabio.cn

Images

Fig1: Western blot analysis of GAPDH on different lysates with Mouse anti-GAPDH antibody (EM1101) at 1/5,000 dilution.



Lane 1: MDA-MB-231 cell lysate (20 µg/Lane)

Lane 2: HeLa cell lysate (20 µg/Lane)

Lane 3: MCF7 cell lysate (20 µg/Lane)

Lane 4: SK-Br-3 cell lysate (20 µg/Lane)

Lane 5: JAR cell lysate (20 µg/Lane)

Lane 6: NIH/3T3 cell lysate (20 µg/Lane)

Lane 7: C2C12 cell lysate (20 µg/Lane)

Lane 8: PC-12 cell lysate (20 µg/Lane)

Lane 9: Mouse kidney tissue lysate (40 µg/Lane)

Lane 10: Rat liver tissue lysate (40 µg/Lane)

Predicted band size: 36 kDa

Observed band size: 36 kDa

Exposure time: 1 minute 30 seconds;

4-20% SDS-PAGE gel.

Proteins were transferred to a PVDF membrane and blocked with 5% NFDm/TBST for 1 hour at room temperature. The primary antibody (EM1101) at 1/5,000 dilution was used in 5% NFDm/TBST at room temperature for 2 hours. Goat Anti-Mouse IgG - HRP Secondary Antibody (HA1006) at 1/50,000 dilution was used for 1 hour at room temperature.

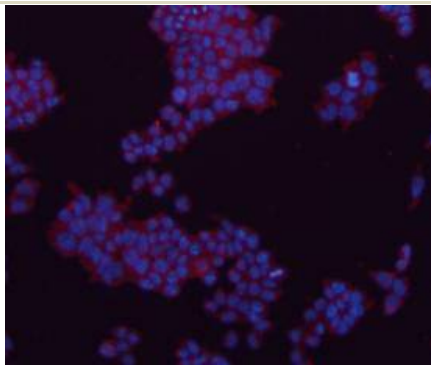


Fig2: ICC staining GAPDH in F9 cells (red). The nuclear counter stain is DAPI (blue). Cells were fixed in paraformaldehyde, permeabilised with 0.25% Triton X100/PBS.

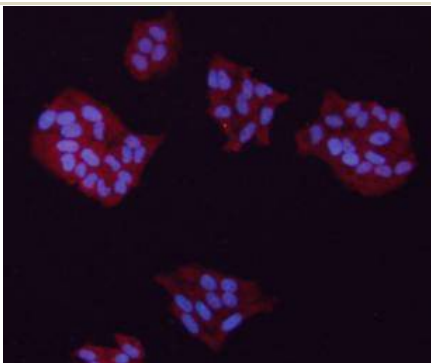


Fig3: ICC staining GAPDH in HeLa cells (red). The nuclear counter stain is DAPI (blue). Cells were fixed in paraformaldehyde, permeabilised with 0.25% Triton X100/PBS.

Hangzhou Huaan Biotechnology Co., Ltd.

Orders:0086-571-88062880

Technical:0086-571-89986345

Service mail:support@huabio.cn

华安生物
HUABIO
www.huabio.cn

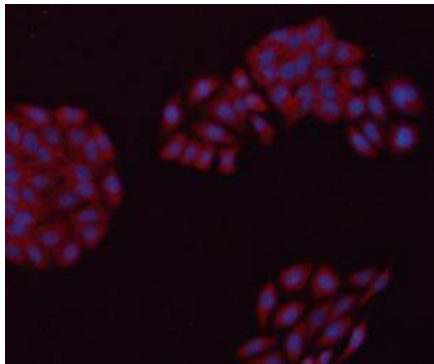


Fig4: ICC staining GAPDH in HepG2 cells (red). The nuclear counter stain is DAPI (blue). Cells were fixed in paraformaldehyde, permeabilised with 0.25% Triton X100/PBS.

Note: All products are "FOR RESEARCH USE ONLY AND ARE NOT INTENDED FOR DIAGNOSTIC OR THERAPEUTIC USE".

Background References

1. "The glyceraldehyde 3 phosphate dehydrogenase gene family: structure of a human cDNA and of an X chromosome linked pseudogene; amazing complexity of the gene family in mouse." Hanauer A., Mandel J.-L. EMBO J. 3:2627-2633(1983)
2. "Enhanced expression of a glyceraldehyde-3-phosphate dehydrogenase gene in human lung cancers." Tokunaga K., Nakamura Y., Sakata K., Fujimori K., Ohkubo M., Sawada K., Sakiyama S. Cancer Res. 47:5616-5619(1986)
3. "Glyceraldehyde-3-phosphate dehydrogenase is phosphorylated by protein kinase Ciota /lambda and plays a role in microtubule dynamics in the early secretory pathway." Tisdale E.J.J. Biol. Chem. 277:3334-3341(2001)

Hangzhou Huaan Biotechnology Co., Ltd.

Orders:0086-571-88062880

Technical:0086-571-89986345

Service mail:support@huabio.cn

华安生物
HUABIO
www.huabio.cn