

Anti-Frizzled-5 Antibody

0905-3



Product Type:	Rabbit polyclonal IgG, primary antibodies
Species reactivity:	Human
Applications:	WB, IF-Cell, FC
Molecular Wt:	Predicted band size: 64 kDa

Description: Frizzled-5 belongs to the G-protein coupled receptor Fz/Smo family, contains 585 amino acids. It is localized at the plasma membrane and also found at the Golgi. Fzds have a large extracellular N-terminal region containing a cysteine-rich domain (CRD), which is involved in binding to Wnt proteins. Most of frizzled receptors are coupled to the beta-catenin canonical signaling pathway, which leads to the activation of disheveled proteins, inhibition of GSK-3 kinase, nuclear accumulation of beta-catenin and activation of Wnt target genes.

Immunogen: Synthetic peptide within Human Frizzled-5 aa 143-192 / 585.

Positive control: Human ES cell, A549, LOVO, HepG2.

Subcellular location: Cell membrane.Golgi apparatus. Membrane. Synapse.

Database links: SwissProt: Q13467 Human

Recommended Dilutions:

WB	1:500-1:1,000
IF-Cell	1:50-1:200
FC	1:50-1:100

Storage Buffer: 1*PBS (pH7.4), 0.2% BSA, 25% Glycerol. Preservative: 0.05% Sodium Azide.

Storage Instruction: Store at +4°C after thawing. Aliquot store at -20°C. Avoid repeated freeze / thaw cycles.

Purity: Immunogen affinity purified.

Hangzhou Huaan Biotechnology Co., Ltd.

Orders:0086-571-88062880

Technical:0086-571-89986345

Service mail:support@huabio.cn

 华安生物
HUABIO
www.huabio.cn

Images

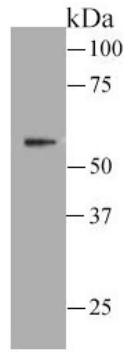


Fig1: Western blot analysis of Frizzled-5 on human ES cell lysate. Proteins were transferred to a PVDF membrane and blocked with 5% BSA in PBS for 1 hour at room temperature. The primary antibody was used at a 1:500 dilution in 5% BSA at room temperature for 2 hours. Goat Anti-Rabbit IgG - HRP Secondary Antibody (HA1001) at 1:5,000 dilution was used for 1 hour at room temperature.

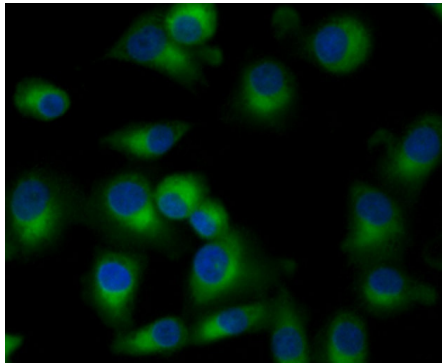


Fig2: ICC staining Frizzled-5 in A549 cells (green). Formalin fixed cells were permeabilized with 0.1% Triton X-100 in TBS for 10 minutes at room temperature and blocked with 1% Blocker BSA for 15 minutes at room temperature. Cells were probed with the antibody (0905-3) at a dilution of 1:100 for 1 hour at room temperature, washed with PBS. Alexa Fluor[™] 488 Goat anti-Rabbit IgG was used as the secondary antibody at 1/100 dilution. The nuclear counter stain is DAPI (blue).

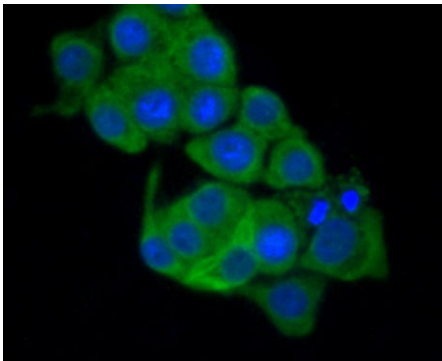


Fig3: ICC staining Frizzled-5 in LOVO cells (green). Formalin fixed cells were permeabilized with 0.1% Triton X-100 in TBS for 10 minutes at room temperature and blocked with 1% Blocker BSA for 15 minutes at room temperature. Cells were probed with the antibody (0905-3) at a dilution of 1:100 for 1 hour at room temperature, washed with PBS. Alexa Fluor[™] 488 Goat anti-Rabbit IgG was used as the secondary antibody at 1/100 dilution. The nuclear counter stain is DAPI (blue).

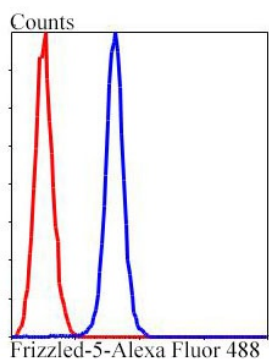


Fig4: Flow cytometric analysis of Frizzled-5 was done on HepG2 cells. The cells were fixed, permeabilized and stained with Frizzled-5 antibody at 1/100 dilution (blue) compared with an unlabelled control (cells without incubation with primary antibody; red). After incubation of the primary antibody on room temperature for an hour, the cells was stained with a Alexa Fluor[™] 488-conjugated goat anti-rabbit IgG Secondary antibody at 1/500 dilution.

Hangzhou Huaan Biotechnology Co., Ltd.

Orders:0086-571-88062880

Technical:0086-571-89986345

Service mail:support@huabio.cn

华安生物
HUABIO
www.huabio.cn

Note: All products are "FOR RESEARCH USE ONLY AND ARE NOT INTENDED FOR DIAGNOSTIC OR THERAPEUTIC USE".

Background References

1. He X et al. A member of the Frizzled protein family mediating axis induction by Wnt-5A. *Science* 275:1652-1654 (1997).
2. Hsieh J.C et al. Biochemical characterization of Wnt-frizzled interactions using a soluble, biologically active vertebrate Wnt protein. *Proc Natl Acad Sci USA* 96:3546-3551 (1999).

Hangzhou Huaan Biotechnology Co., Ltd.

Orders:0086-571-88062880

Technical:0086-571-89986345

Service mail:support@huabio.cn

 华安生物
HUAABIO
www.huabio.cn