

Anti-Beta III Tubulin Antibody

0807-2



Product Type:	Rabbit polyclonal IgG, primary antibodies
Species reactivity:	Human, Mouse, Rat
Applications:	WB
Molecular Wt:	50 kDa

Description: Tubulin is one of several members of a small family of globular proteins. The most common members of the tubulin family are α -tubulin and β -tubulin. The beta-tubulin (relative molecular weight about 50 kDa) is counterpart of alpha-tubulin in tubulin heterodimer, it is coded by multiple tubulin genes and it is also posttranslationally modified. Heterogeneity of subunit is concentrated in C-terminal structural domain. Beta-Tubulin may have bound GTP or GDP. Under certain conditions β -tubulin can hydrolyze its bound GTP to GDP plus P_i , release the P_i , and exchange the GDP for GTP.

Immunogen: Synthetic peptide within Human Beta-Tubulin aa 401-450 / 450.

Positive control: HeLa, PC12

Subcellular location: Microtubule

Database links: SwissProt: Q13509 Human | Q9ERD7 Mouse | Q4QRB4 Rat

Recommended Dilutions:
WB 1:2,000

Storage Buffer: 1*PBS (pH7.4), 0.2% BSA, 40% Glycerol. Preservative: 0.05% Sodium Azide.

Storage Instruction: Store at +4°C after thawing. Aliquot store at -20°C. Avoid repeated freeze / thaw cycles.

Purity: Immunogen affinity purified.

Hangzhou HuaAn Biotechnology Co.,Ltd.

Orders: 0086-571-88062880

Technical:0086-571-89986345

Service mail: support@huabio.cn

www.huabio.cn



Applications: WB=Western blot IP=Immunoprecipitation IHC=Immunohistochemistry IF=Immunofluorescence FC=Flow cytometry

Images

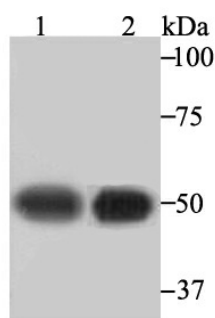


Fig1: Western blot analysis of beta III Tubulin on PC-12 (1) and HeLa (2) cell lysate using anti-beta III Tubulin antibody at 1/2,000 dilution.

Note: All products are "FOR RESEARCH USE ONLY AND ARE NOT INTENDED FOR DIAGNOSTIC OR THERAPEUTIC USE".

Background References

1. Westermann, S. and Weber, K. (2003) Nat. Rev. Mol. Cell Biol. 4, 938 -947.
2. Ranganathan S., Dexter D.W., Benetatos C.A., Hudes G.R.; "Cloning and sequencing of human betalll-tubulin cDNA: induction of betalll isotype in human prostate carcinoma cells by acute exposure to antimicrotubule agents."; Biochim. Biophys. Acta 1395:237-245(1998).
3. The MGC Project Team; "The status, quality, and expansion of the NIH full-length cDNA project: the Mammalian Gene Collection (MGC)."; Genome Res. 14:2121-2127(2004).



Hangzhou HuaAn Biotechnology Co.,Ltd.

Orders: 0086-571-88062880

Technical:0086-571-89986345

Service mail: support@huabio.cn

www.huabio.cn

Applications: WB=Western blot IP=Immunoprecipitation IHC=Immunohistochemistry IF=Immunofluorescence FC=Flow cytometry